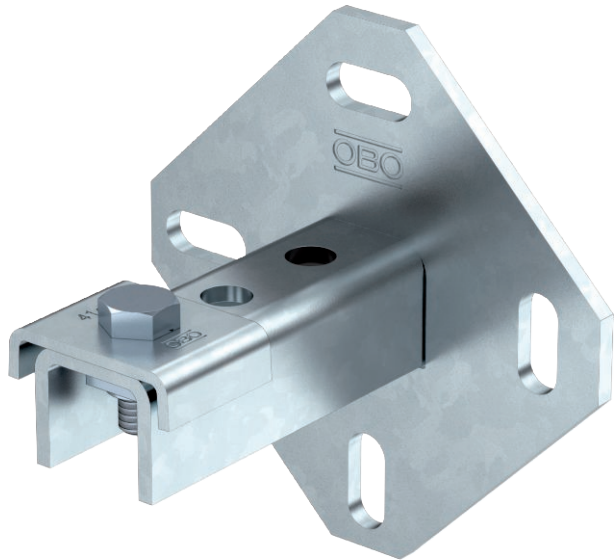


# Technical data sheet

## Wall, floor and ceiling bracket with 3 holes

Item no. 1123191



The wall, floor and ceiling bracket can ideally be used as a panel for wall, floor and ceiling mounting.  
Also suitable for stand and frame construction in conjunction with the mounting rails MS4141.

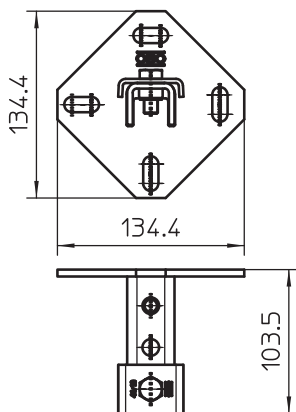


|    |                    |
|----|--------------------|
| St | Steel              |
| FT | Hot-dip galvanised |

### Master data

|                          |                    |
|--------------------------|--------------------|
| Item no.                 | 1123191            |
| Type                     | WBDHE 41 FT        |
| Description 1            | Wall holder        |
| Description 2            | combination MS 41  |
| Dimension                | 134x110x102        |
| Material                 | Steel              |
| Material symbol          | St                 |
| Surface                  | Hot-dip galvanised |
| Surface to DIN           | DIN EN ISO 1461    |
| Surface symbol           | FT                 |
| Smallest sales unit (VG) | 10 Piece           |
| Weight                   | 73,00 kg/100 pc.   |

### Technical data



|                    |                |
|--------------------|----------------|
| Length             | 102,00 mm      |
| Width              | 134,00 mm      |
| Height             | 110,00 mm      |
| lampDimension WxH  | 134x110 mm     |
| Version            | Perforated     |
| Version            | Single profile |
| Hole size          | 25 x 11 mm     |
| Material thickness | 5,00 mm        |
| Profile shape      | C profile      |
| Slot width         | 22,00 mm       |
| Static value A     |                |
| Static value Iy    |                |
| Static value Iz    |                |
| Static value Wy    |                |
| Static value Wz    |                |