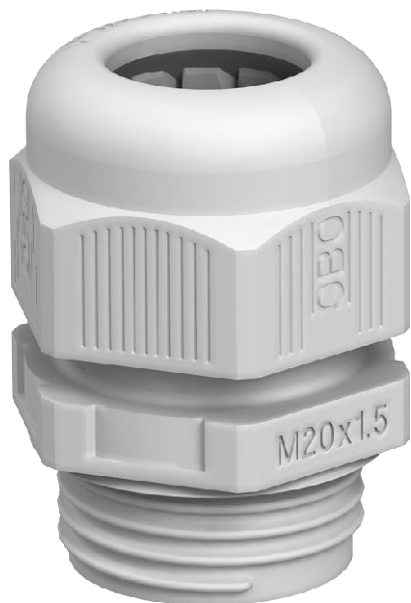


Technical data sheet

Cap nut cable gland, metric thread, silver grey

Item no. 2022853



The quickest and most convenient way of providing strain relief and tightness with cable glands on junction boxes and housings is with the tried-and-trusted V-TEC VM cable glands from OBO. With the integrated sealing lip and the special OBO lamella technology, protection class IP68 is achieved. Strain relief and tightness have been tested to DIN EN 62444.

The connecting threads of the cable glands are metric or PG and are therefore suitable for universal use. Once screwed in place, the installation is there forever, as the optimum thread adjustment with the right pitch ensures permanent resistance to shaking.

Applications: From private housing with junction boxes up to industrial applications in the distributor cabinet.

Temperature range: -20 °C to +65 °C.

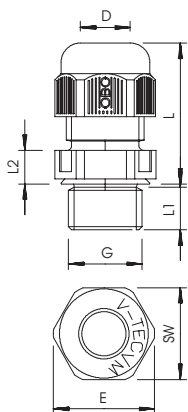


PA Polyamide

Master data

Item no.	2022853
Type	V-TEC VM40 SGR
Description 1	Cable gland
Description 2	fully metric
Dimension	M40
Colour	Silver grey
RAL number	7001
Material	Polyamide
Material symbol	PA
Smallest sales unit (VG)	10 Piece
Weight	3,47 kg/100 pc.

Technical data



Dimension E	50,00 mm
Dimension L min.	36,00 mm
Dimension L max.	46,00 mm
Dimension L1	11,00 mm
Dimension L2	7,00 mm
WAF	44,00 mm
Version	Straight
Type of seal	Sealing ring
Bend protection	<input type="checkbox"/>
Sealing range D	16,00 - 28,00 mm
Sealing range D	0,63 - 1,10 in
explosion-proof	<input type="checkbox"/>
Flat cable threaded connection	<input type="checkbox"/>
For Ex zone	Without
For Ex zone gas	Without
For Ex zone dust	Without
Flame-resistant	acc. to VDE 0471/DIN 695 Part 2-1, test temperature 650°C
Thread	M40 x 1,5
Thread type	Metric
Thread length	11,00 mm
Thread increase	1,50 mm
Nominal thread size	40

Technical data sheet

Cap nut cable gland, metric thread, silver grey

Item no. 2022853



Technical data

Fibre-glass reinforced	<input type="checkbox"/>
Halogen-free	<input checked="" type="checkbox"/>
Installation torque	10,00 Nm
Multiple sealing insert	<input type="checkbox"/>
With locknut	<input type="checkbox"/>
Impact-resistant	<input type="checkbox"/>
Hexagonal corner dimension	50,00 mm
Protection rating	IP68
Splittable gland	<input type="checkbox"/>
max. permitted ambient temperature	-20,00 - 65,00 °C
Strain relief option	<input checked="" type="checkbox"/>