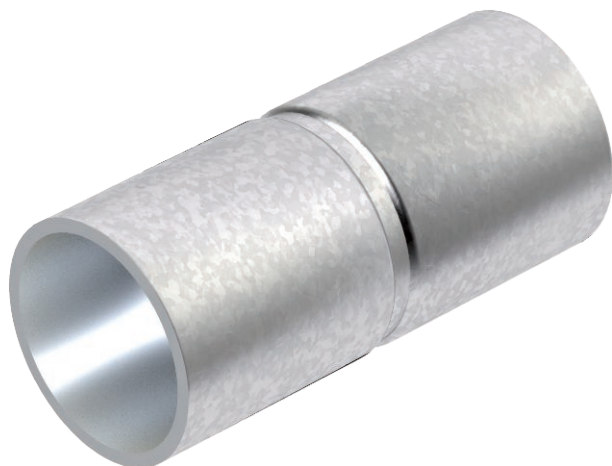


# Technical data sheet

## Hot-dip galvanised steel sleeve, without thread

Item no. 2046625



Accessory part: plug-in sleeve for the connections between electrical installation pipes. With burr-free inner wall.

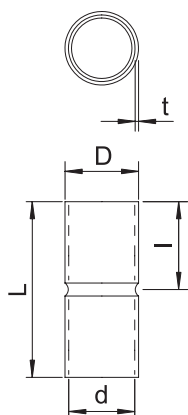


<b>St</b>	Steel
<b>FT</b>	Hot-dip galvanised

### Master data

Item no.	2046625
Type	SV50W FT
Description 1	Conduit plug-in coupler
Description 2	without thread
Dimension	Ø50mm
Material	Steel
Material symbol	St
Surface	Hot-dip galvanised
Surface to DIN	DIN EN ISO 1461
Surface symbol	FT
Smallest sales unit (VG)	10 Piece
Weight	22,00 kg/100 pc.

### Technical data



Length	100,00 mm
Dimension D	54,00 mm
Dimension L	100,00 mm
Dimension M	M50
Dimension d	51,00 mm
Dimension t	1,50 mm
Dimension l	50,00 mm
Version	Connector
For pipe diameter	50,00 mm
Size	50
Halogen-free	<input checked="" type="checkbox"/>
Polished surface	<input type="checkbox"/>
Brushed surface	<input type="checkbox"/>
With inspection opening and lid	<input type="checkbox"/>
max. permitted ambient temperature	-45,00 - 400,00 °C
Two-part	<input type="checkbox"/>