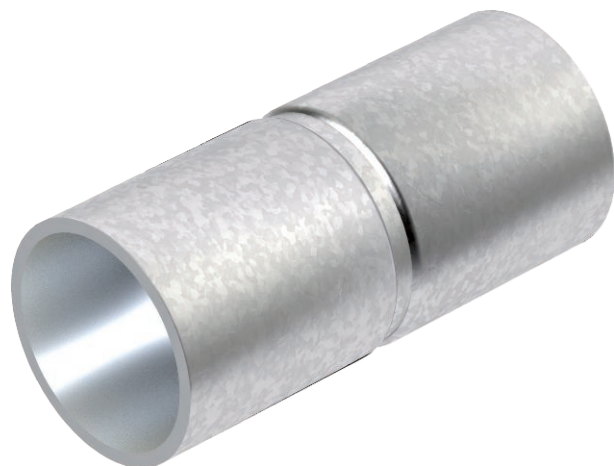


# Technical data sheet

## Hot-dip galvanised steel sleeve, without thread

Item no. 2046623



Accessory part: plug-in sleeve for the connections between electrical installation pipes. With burr-free inner wall.

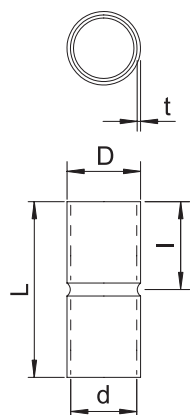


<b>St</b>	Steel
<b>FT</b>	Hot-dip galvanised

### Master data

Item no.	2046623
Type	SV32W FT
Description 1	Conduit plug-in coupler
Description 2	without thread
Dimension	Ø32mm
Material	Steel
Material symbol	St
Surface	Hot-dip galvanised
Surface to DIN	DIN EN ISO 1461
Surface symbol	FT
Smallest sales unit (VG)	50 Piece
Weight	7,50 kg/100 pc.

### Technical data



Length	70,00 mm
Dimension D	35,20 mm
Dimension L	70,00 mm
Dimension M	M32
Dimension d	32,80 mm
Dimension t	1,20 mm
Dimension l	35,00 mm
Version	Connector
For pipe diameter	32,00 mm
Size	32
Halogen-free	<input checked="" type="checkbox"/>
Polished surface	<input type="checkbox"/>
Brushed surface	<input type="checkbox"/>
With inspection opening and lid	<input type="checkbox"/>
max. permitted ambient temperature	-45,00 - 400,00 °C
Two-part	<input type="checkbox"/>