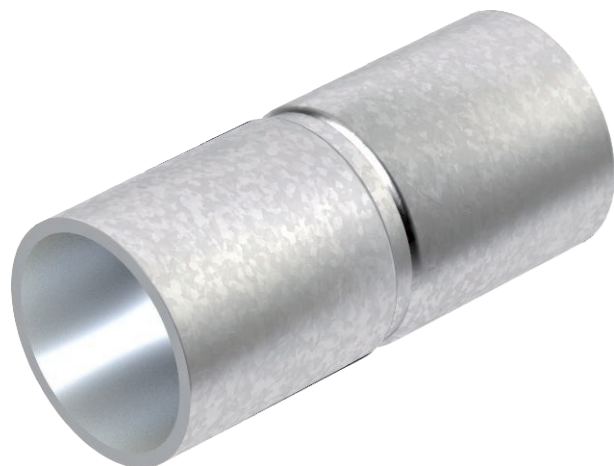


Technical data sheet

Hot-dip galvanised steel sleeve, without thread

Item no. 2046622



Accessory part: plug-in sleeve for the connections between electrical installation pipes. With burr-free inner wall.

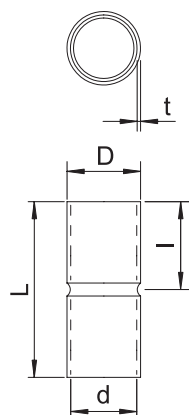


St	Steel
FT	Hot-dip galvanised

Master data

Item no.	2046622
Type	SV25W FT
Description 1	Conduit plug-in coupler
Description 2	without thread
Dimension	Ø25mm
Material	Steel
Material symbol	St
Surface	Hot-dip galvanised
Surface to DIN	DIN EN ISO 1461
Surface symbol	FT
Smallest sales unit (VG)	50 Piece
Weight	5,10 kg/100 pc.

Technical data



Length	60,00 mm
Dimension D	28,10 mm
Dimension L	60,00 mm
Dimension M	M25
Dimension d	25,70 mm
Dimension t	1,20 mm
Dimension l	30,00 mm
Version	Connector
For pipe diameter	25,00 mm
Size	25
Halogen-free	<input checked="" type="checkbox"/>
Polished surface	<input type="checkbox"/>
Brushed surface	<input type="checkbox"/>
With inspection opening and lid	<input type="checkbox"/>
max. permitted ambient temperature	-45,00 - 400,00 °C
Two-part	<input type="checkbox"/>