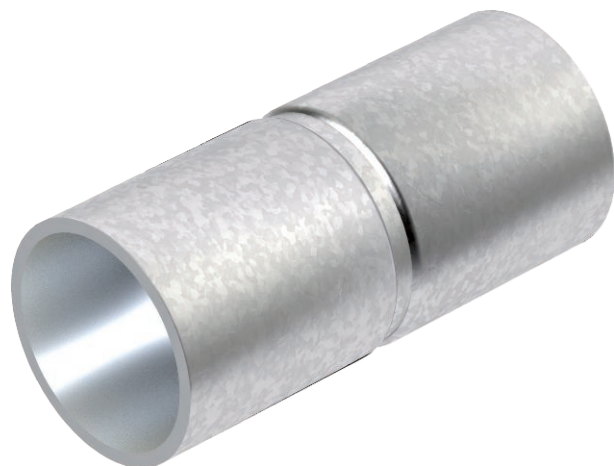


Technical data sheet

Hot-dip galvanised steel sleeve, without thread

Item no. 2046621



Accessory part: plug-in sleeve for the connections between electrical installation pipes. With burr-free inner wall.

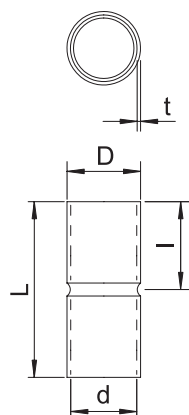


| | |
|-----------|--------------------|
| St | Steel |
| FT | Hot-dip galvanised |

Master data

| | |
|--------------------------|-------------------------|
| Item no. | 2046621 |
| Type | SV20W FT |
| Description 1 | Conduit plug-in coupler |
| Description 2 | without thread |
| Dimension | Ø20mm |
| Material | Steel |
| Material symbol | St |
| Surface | Hot-dip galvanised |
| Surface to DIN | DIN EN ISO 1461 |
| Surface symbol | FT |
| Smallest sales unit (VG) | 50 Piece |
| Weight | 3,20 kg/100 pc. |

Technical data



| | |
|------------------------------------|-------------------------------------|
| Length | 60,00 mm |
| Dimension D | 23,10 mm |
| Dimension L | 60,00 mm |
| Dimension M | M20 |
| Dimension d | 20,70 mm |
| Dimension t | 1,20 mm |
| Dimension l | 30,00 mm |
| Version | Connector |
| For pipe diameter | 20,00 mm |
| Size | 20 |
| Halogen-free | <input checked="" type="checkbox"/> |
| Polished surface | <input type="checkbox"/> |
| Brushed surface | <input type="checkbox"/> |
| With inspection opening and lid | <input type="checkbox"/> |
| max. permitted ambient temperature | -45,00 - 400,00 °C |
| Two-part | <input type="checkbox"/> |