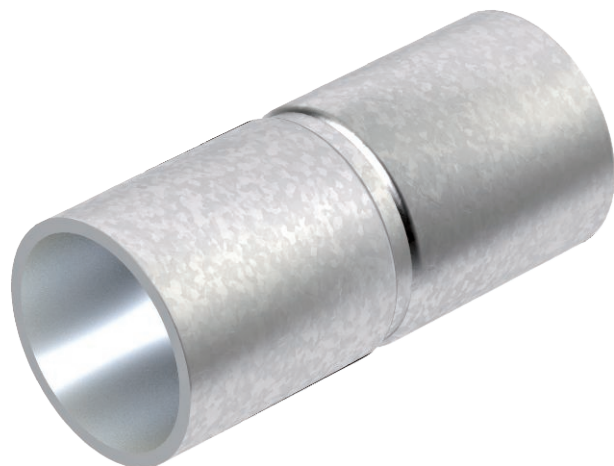


Technical data sheet

Hot-dip galvanised steel sleeve, without thread

Item no. 2046620



Accessory part: plug-in sleeve for the connections between electrical installation pipes. With burr-free inner wall.

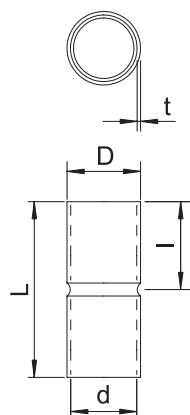


St	Steel
FT	Hot-dip galvanised

Master data

Item no.	2046620
Type	SV16W FT
Description 1	Conduit plug-in coupler
Description 2	without thread
Dimension	Ø16mm
Material	Steel
Material symbol	St
Surface	Hot-dip galvanised
Surface to DIN	DIN EN ISO 1461
Surface symbol	FT
Smallest sales unit (VG)	25 Piece
Weight	2,20 kg/100 pc.

Technical data



Length	50,00 mm
Dimension D	18,60 mm
Dimension L	50,00 mm
Dimension M	M16
Dimension d	16,60 mm
Dimension t	1,00 mm
Dimension l	25,00 mm
Version	Connector
For pipe diameter	16,00 mm
Size	16
Halogen-free	<input checked="" type="checkbox"/>
Polished surface	<input type="checkbox"/>
Brushed surface	<input type="checkbox"/>
With inspection opening and lid	<input type="checkbox"/>
max. permitted ambient temperature	-45,00 - 400,00 °C
Two-part	<input type="checkbox"/>