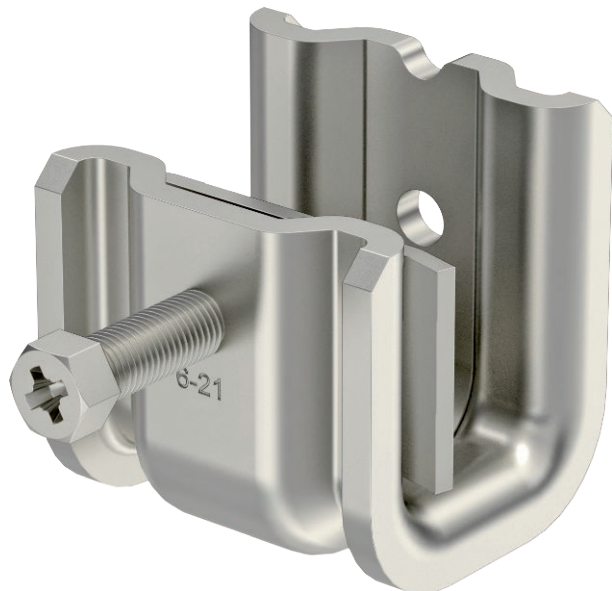


# Technical data sheet

## Beam clamp SSP 6-21

Item no. 1486236



This type of beam clamp is pushed onto the support and fixed to the girder or flat iron using a pressure trough and bolt (M8). The hexagonal bolt has a WAF of 10 mm. In the clip element, two additional M6 threads are also incorporated, to fix threaded rods, for example.

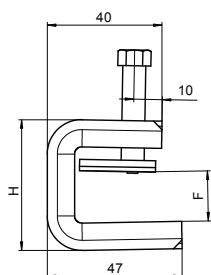
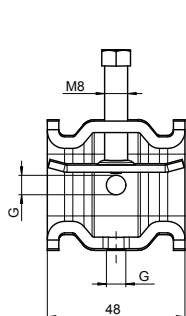


**A4** Stainless steel, rustproof 1.4404  
**2B** Bright, reworked

### Master data

Item no.	1486236
Type	SSP 6-21 M6 A4
Description 1	Beam clamp
Description 2	heavyweight design
Dimension	6-21 mm
Material	Stainless steel, material no. 1.4404
Material symbol	A4
Surface	Bright, reworked
Surface symbol	2B
Smallest sales unit (VG)	25 Piece
Weight	23,20 kg/100 pc.

### Technical data



Dimension B	48,00 mm
Dimension H	46,00 mm
Dimension L	47,00 mm
Connection type/component	Thread
Fastening type	Clamp
Breaking load F1	1,75 kN
Breaking load F2	1,50 kN
Flangethickness for threaded rod	6,00 - 21,00 mm
For metric threaded rod	6
Thread	M8
Thread size M	8
Hinge, adjustable	<input type="checkbox"/>
Hinged	<input type="checkbox"/>

# Technical data sheet

## Beam clamp SSP 6-21

Item no. 1486236



### Technical data

