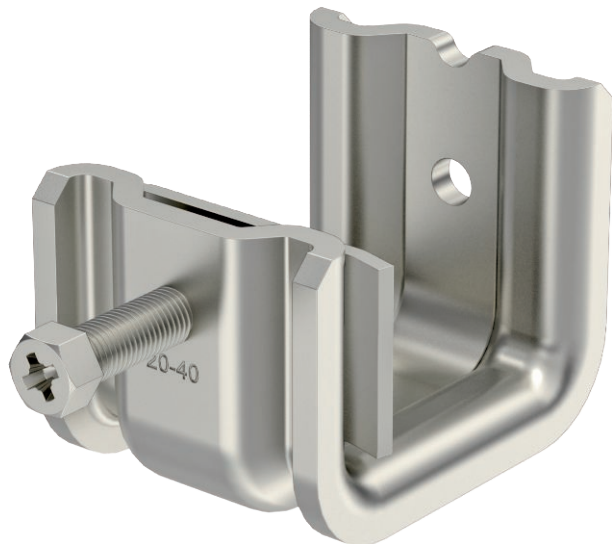


# Technical data sheet

## Beam clamp SSP 20-40

Item no. 1486294



This type of support clamp is pushed onto the support and fixed to the girder or flat iron using a pressure trough and bolt (M8). The hexagonal bolt has a WAF of 10 mm. In the clip element also two more M8 threads are introduced, for example to attach threaded rods.

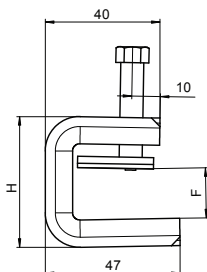
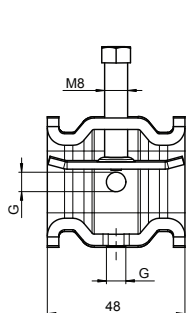


**A4** Stainless steel, rustproof 1.4404  
**2B** Bright, reworked

### Master data

Item no.	1486294
Type	SSP 20-40 M8 A4
Description 1	Beam clamp
Description 2	heavyweight design
Dimension	20-40mm
Material	Stainless steel, material no. 1.4404
Material symbol	A4
Surface	Bright, reworked
Surface symbol	2B
Smallest sales unit (VG)	25 Piece
Weight	27,80 kg/100 pc.

### Technical data



Dimension B	48,00 mm
Dimension H	65,00 mm
Dimension L	47,00 mm
Connection type/component	Thread
Fastening type	Clamp
Breaking load F1	1,40 kN
Breaking load F2	1,30 kN
Flangethickness for threaded rod	20,00 - 40,00 mm
For metric threaded rod	M8
Thread	M8
Thread size M	8
Hinge, adjustable	<input type="checkbox"/>
Hinged	<input type="checkbox"/>

# Technical data sheet

## Beam clamp SSP 20-40

Item no. 1486294



### Technical data

