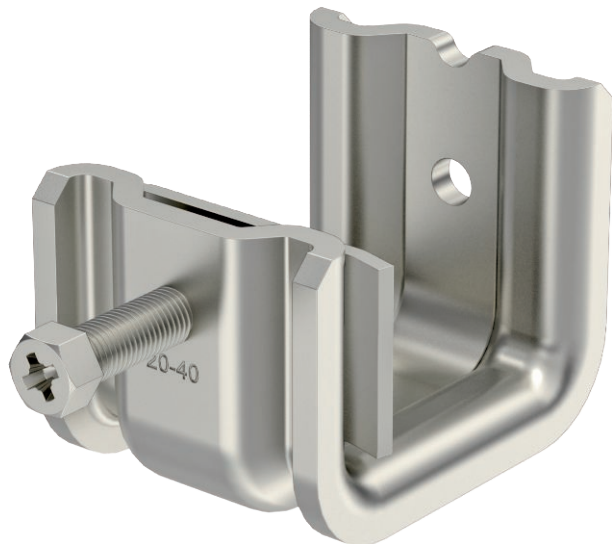


Technical data sheet

Beam clamp SSP 20-40

Item no. 1486292



This type of support clamp is pushed onto the support and fixed to the girder or flat iron using a pressure trough and bolt (M8). The hexagonal bolt has a WAF of 10 mm. In the clip element also two more M8 threads are introduced, for example to attach threaded rods.



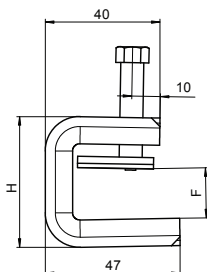
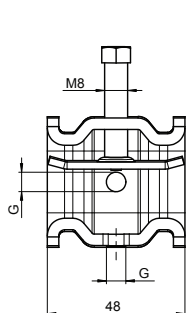
A2 Stainless steel, rustproof 1.4301

2B Bright, reworked

Master data

Item no.	1486292
Type	SSP 20-40 M8 A2
Description 1	Beam clamp
Description 2	heavyweight design
Dimension	20-40mm
Material	Stainless steel, material no. 1.4301
Material symbol	A2
Surface	Bright, reworked
Surface symbol	2B
Smallest sales unit (VG)	25 Piece
Weight	27,80 kg/100 pc.

Technical data



Dimension B	48,00 mm
Dimension H	65,00 mm
Dimension L	47,00 mm
Connection type/component	Thread
Fastening type	Clamp
Breaking load F1	1,40 kN
Breaking load F2	1,30 kN
Flangethickness for threaded rod	20,00 - 40,00 mm
For metric threaded rod	M8
Thread	M8
Thread size M	8
Hinge, adjustable	<input type="checkbox"/>
Hinged	<input type="checkbox"/>

Technical data sheet

Beam clamp SSP 20-40

Item no. 1486292



Technical data

