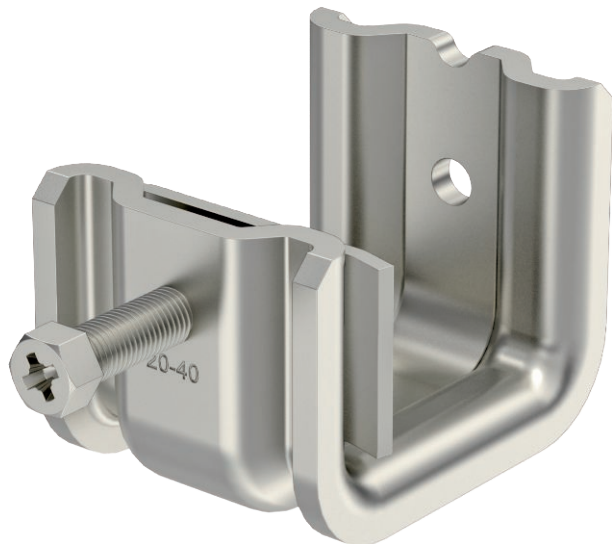


Technical data sheet

Beam clamp SSP 20-40

Item no. 1486242



This type of beam clamp is pushed onto the support and fixed to the girder or flat iron using a pressure trough and bolt (M8). The hexagonal bolt has a WAF of 10 mm. In the clip element, two additional M6 threads are also incorporated, to fix threaded rods, for example.



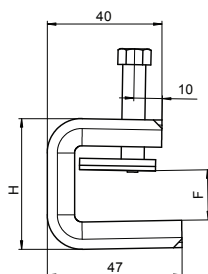
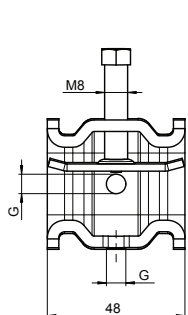
A2 Stainless steel, rustproof

2B Bright, reworked

Master data

Item no.	1486242
Type	SSP 20-40 M6 A2
Description 1	Beam clamp
Description 2	heavyweight design
Dimension	20-40mm
Material	Stainless steel, material A2
Material symbol	A2
Surface	Bright, reworked
Surface symbol	2B
Smallest sales unit (VG)	25 Piece
Weight	27,70 kg/100 pc.

Technical data



Dimension B	48,00 mm
Dimension H	65,00 mm
Dimension L	47,00 mm
Connection type/component	Thread
Fastening type	Clamp
Breaking load F1	1,40 kN
Breaking load F2	1,30 kN
Flangethickness for threaded rod	20,00 - 40,00 mm
For metric threaded rod	M6
Thread	M8
Thread size M	8
Hinge, adjustable	<input type="checkbox"/>
Hinged	<input type="checkbox"/>

Technical data sheet

Beam clamp SSP 20-40

Item no. 1486242



Technical data

