

# Technical data sheet

## Stainless steel pipe bend, V4A

Item no. 2046762



90° bend with moulded sleeves, for electrical installation pipes according to EN 61386-1. With burr-free inner wall.

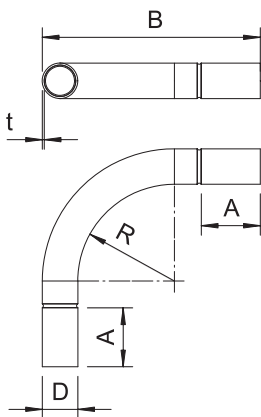


A4 Stainless steel, rustproof 1.4571  
2B Bright, reworked

### Master data

Item no.	2046762
Type	SB25W A4
Description 1	Stainless steel bend
Description 2	without thread
Dimension	ø25mm
Material	Stainless steel, material no. 1.4571
Material symbol	A4
Surface	Bright, reworked
Surface symbol	2B
Smallest sales unit (VG)	10 Piece
Weight	20,40 kg/100 pc.

### Technical data



Dimension A	81,50 mm
Dimension B	194,00 mm
Dimension D	27,20 mm
Dimension M	M25
Dimension R	112,50 mm
Dimension t	1,00 mm
Dimension I	30,00 mm
Version	Connector
Size	25
For nominal pipe diameter	25,00 mm
Flexible	<input type="checkbox"/>
Halogen-free	<input type="checkbox"/>
With inspection opening and lid	<input type="checkbox"/>
With sleeve	<input checked="" type="checkbox"/>
Polished surface	<input type="checkbox"/>
Brushed surface	<input checked="" type="checkbox"/>
max. permitted ambient temperature	-45,00 - 400,00 °C
Angle of the bend	90,00 °
Two-part	<input type="checkbox"/>