

# Technical data sheet

## Stainless steel pipe bend, V4A

Item no. 2046760



90° bend with moulded sleeves, for electrical installation pipes according to EN 61386-1. With burr-free inner wall.

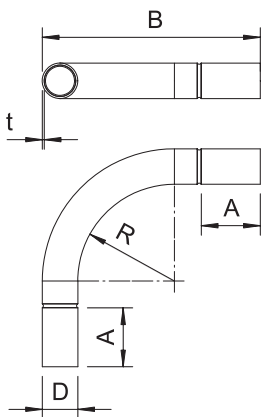


**A4** Stainless steel, rustproof 1.4571  
**2B** Bright, reworked

### Master data

Item no.	2046760
Type	SB16W A4
Description 1	Stainless steel bend
Description 2	without thread
Dimension	ø16mm
Material	Stainless steel, material no. 1.4571
Material symbol	A4
Surface	Bright, reworked
Surface symbol	2B
Smallest sales unit (VG)	5 Piece
Weight	7,20 kg/100 pc.

### Technical data



Dimension A	54,00 mm
Dimension B	104,00 mm
Dimension D	18,20 mm
Dimension M	M16
Dimension R	50,00 mm
Dimension t	1,00 mm
Dimension I	25,00 mm
Version	Connector
Size	16
For nominal pipe diameter	16,00 mm
Flexible	<input type="checkbox"/>
Halogen-free	<input type="checkbox"/>
With inspection opening and lid	<input type="checkbox"/>
With sleeve	<input checked="" type="checkbox"/>
Polished surface	<input type="checkbox"/>
Brushed surface	<input checked="" type="checkbox"/>
max. permitted ambient temperature	-45,00 - 400,00 °C
Angle of the bend	90,00 °
Two-part	<input type="checkbox"/>