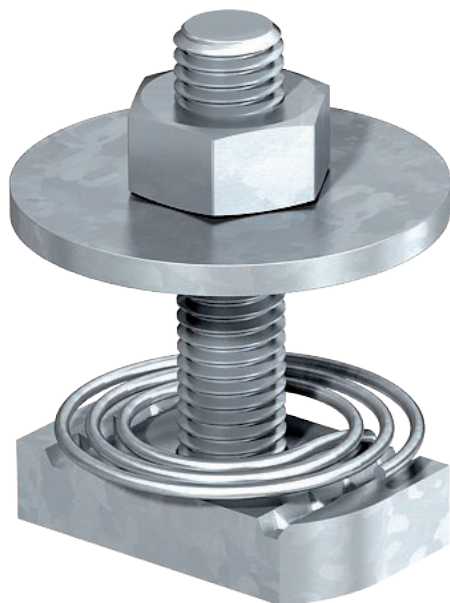


Technical data sheet

Hammer-head bolt with spring

Item no. 1148376



Hammer-head bolt with spring for use with MS4121 and MS4141 profile rails

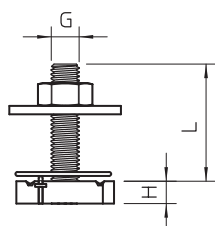
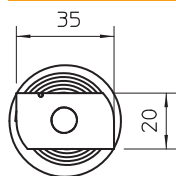


St	Steel
F	Hot galvanised

Master data

Item no.	1148376
Type	MS41HBF M8x30 F
Description 1	Hammerhead screw with spring
Description 2	for profile rail MS4121/4141
Dimension	M8x30mm
Material	Steel
Material symbol	St
Surface	Hot galvanised
Surface to DIN	DIN 267, Teil 10
Surface symbol	F
Smallest sales unit (VG)	50 Piece
Weight	5,20 kg/100 pc.

Technical data



Length	35,00 mm
Width	20,00 mm
Height	6,00 mm
Suitable for mounting rail	<input checked="" type="checkbox"/>
Thread	M 8 x 30
Thread metric	8