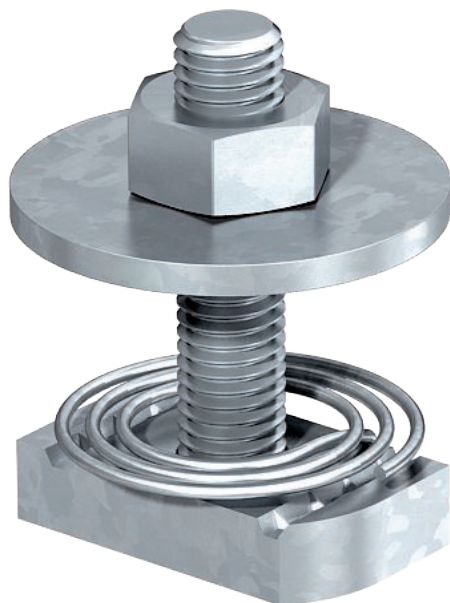


Technical data sheet

Hammer-head bolt with spring

Item no. 1148396



Hammer-head bolt with spring for use with MS4121 and MS4141 profile rails

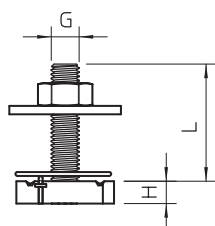
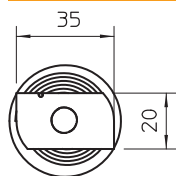


St	Steel
F	Hot galvanised

Master data

Item no.	1148396
Type	MS41HBF M12x60 F
Description 1	Hammerhead screw with spring
Description 2	for profile rail MS4121/4141
Dimension	M12x60mm
Material	Steel
Material symbol	St
Surface	Hot galvanised
Surface to DIN	DIN 267, Teil 10
Surface symbol	F
Smallest sales unit (VG)	25 Piece
Weight	12,70 kg/100 pc.

Technical data



Length	35,00 mm
Width	20,00 mm
Height	9,50 mm
Suitable for mounting rail	<input checked="" type="checkbox"/>
Thread	M 12 x 60
Thread metric	12