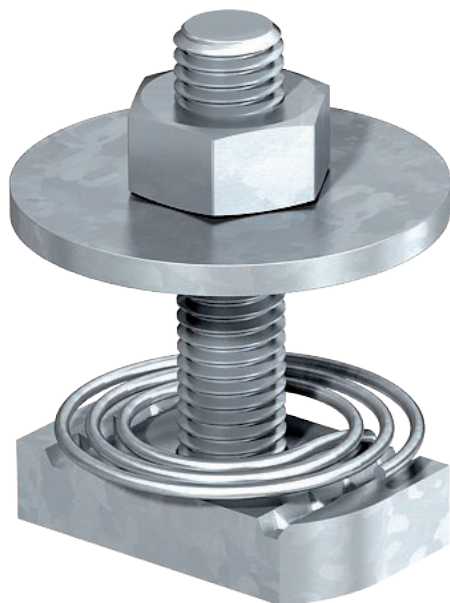


# Technical data sheet

## Hammer-head bolt with spring

Item no. 1148388



Hammer-head bolt with spring for use with MS4121 and MS4141 profile rails

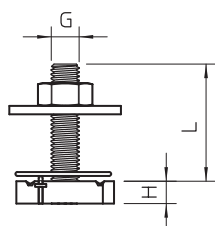
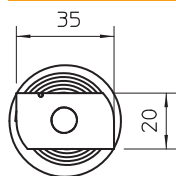


St	Steel
F	Hot galvanised

### Master data

Item no.	1148388
Type	MS41HBF M10x60 F
Description 1	Hammerhead screw with spring
Description 2	for profile rail MS4121/4141
Dimension	M10x60mm
Material	Steel
Material symbol	St
Surface	Hot galvanised
Surface to DIN	DIN 267, Teil 10
Surface symbol	F
Smallest sales unit (VG)	25 Piece
Weight	9,55 kg/100 pc.

### Technical data



Length	35,00 mm
Width	20,00 mm
Height	8,00 mm
Suitable for mounting rail	<input checked="" type="checkbox"/>
Thread	M 10 x 60
Thread metric	10