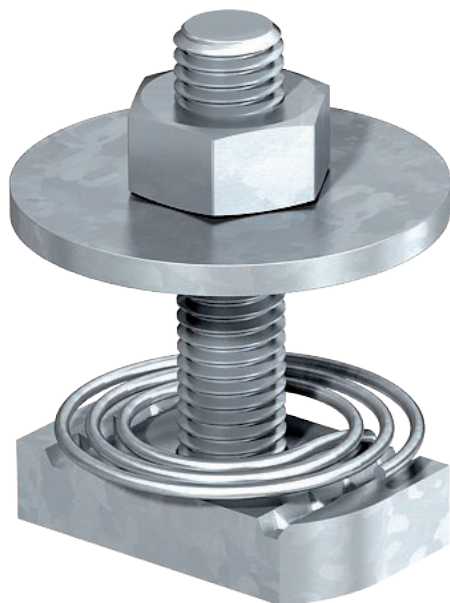


Technical data sheet

Hammer-head bolt with spring

Item no. 1148384



Hammer-head bolt with spring for use with MS4121 and MS4141 profile rails

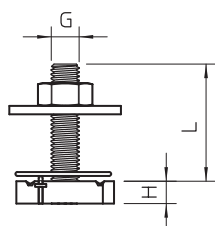
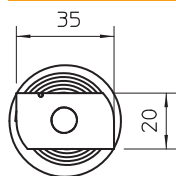


| | |
|----|----------------|
| St | Steel |
| F | Hot galvanised |

Master data

| | |
|--------------------------|------------------------------|
| Item no. | 1148384 |
| Type | MS41HBF M10x30 F |
| Description 1 | Hammerhead screw with spring |
| Description 2 | for profile rail MS4121/4141 |
| Dimension | M10x30mm |
| Material | Steel |
| Material symbol | St |
| Surface | Hot galvanised |
| Surface to DIN | DIN 267, Teil 10 |
| Surface symbol | F |
| Smallest sales unit (VG) | 50 Piece |
| Weight | 7,70 kg/100 pc. |

Technical data



| | |
|----------------------------|-------------------------------------|
| Length | 35,00 mm |
| Width | 20,00 mm |
| Height | 8,00 mm |
| Suitable for mounting rail | <input checked="" type="checkbox"/> |
| Thread | M 10 x 30 |
| Thread metric | 10 |