

Technical data sheet

Plug-in seal for pipes

Item no. 2011546



Plug-in seal for junction boxes for direct insertion of metric pipes

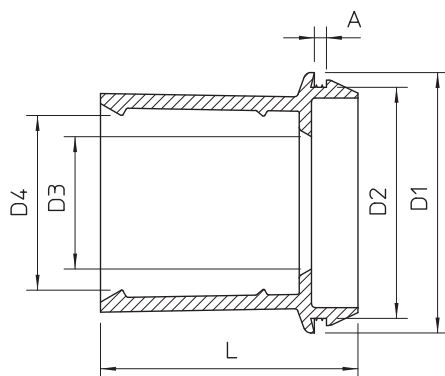


TPE Thermoplastic elastomer

Master data

Item no.	2011546
Type	EDR 40 32-40 LGR
Description 1	Plug-in seal
Description 2	for pipes
Dimension	Ø40/32-40
Colour	Light grey
RAL number	7035
Material	Thermoplastic elastomer
Material symbol	TPE
Smallest sales unit (VG)	25 Piece
Weight	2,20 kg/100 pc.

Technical data



Dimension A	2,20 mm
Dimension D1	46,00 mm
Dimension D2	42,30 mm
Dimension D3	31,00 mm
Dimension D4	39,20 mm
Dimension L	49,00 mm
Version	Open
For diameter	32,00 - 40,00 mm
For wall thickness	2,20 - 2,20
Sealing range D	32,00 - 40,00 mm
Size	M40
Halogen-free	<input checked="" type="checkbox"/>
Nominal diameter	40,00 mm
Protection rating	IP55