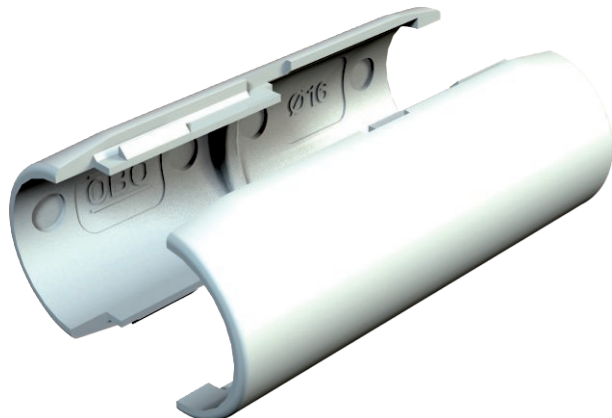


Technical data sheet

Quick pipe connecting sleeve, light grey

Item no. 2153833



The Quick Pipe connection sleeves are VDE-tested and consist of two interconnectable half shells, which can be closed around the Quick Pipe.

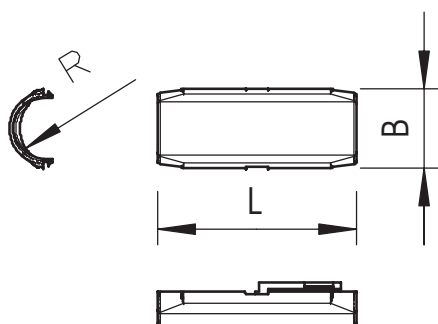


PVC Polyvinylchloride

Master data

Item no.	2153833
Type	2953 M M25 LGR
Description 1	Quick pipe connecting sleeve
Dimension	M25
Colour	Light grey
RAL number	7035
Material	Polyvinylchloride
Material symbol	PVC
Smallest sales unit (VG)	10 Piece
Weight	1,35 kg/100 pc.

Technical data



Dimension B	31,20 mm
Dimension L	72,00 mm
Dimension R	12,55 mm
Thread	M25
Size	M25
Halogen-free	<input type="checkbox"/>
Polished surface	<input type="checkbox"/>
max. permitted ambient temperature	0,00 - 60,00 °C