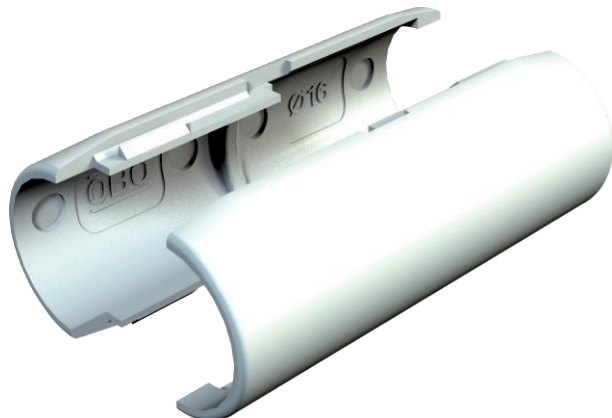


Technical data sheet

Quick pipe connecting sleeve, pure white

Item no. 2153973



The Quick pipe connection sleeves are VDE-tested and consist of two interconnectable half shells, which can be closed around the Quick pipe.



PVC Polyvinylchloride

Master data

Item no.	2153973
Type	2953 M M20 RW
Description 1	Quick pipe connecting sleeve
Dimension	M20
Colour	Pure white
RAL number	9010
Material	Polyvinylchloride
Material symbol	PVC
Smallest sales unit (VG)	10 Piece
Weight	1,02 kg/100 pc.

Technical data

	Dimension B	25,50 mm
	Dimension L	65,00 mm
	Dimension R	10,10 mm
	Size	M20
	Halogen-free	<input type="checkbox"/>
	Polished surface	<input type="checkbox"/>
	max. permitted ambient temperature	0,00 - 60,00 °C