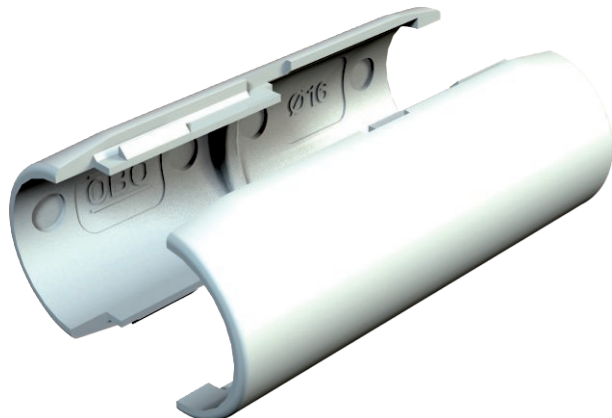


# Technical data sheet

## Quick pipe connecting sleeve, pure white

Item no. 2153971



The Quick pipe connection sleeves are VDE-tested and consist of two interconnectable half shells, which can be closed around the Quick pipe.



**PVC** Polyvinylchloride

### Master data

Item no.	2153971
Type	2953 M M16 RW
Description 1	Quick pipe connecting sleeve
Dimension	M16
Colour	Pure white
RAL number	9010
Material	Polyvinylchloride
Material symbol	PVC
Smallest sales unit (VG)	10 Piece
Weight	0,54 kg/100 pc.

### Technical data

	Dimension B	20,40 mm
	Dimension L	52,00 mm
	Dimension R	7,85 mm
	Size	M16
	Halogen-free	<input type="checkbox"/>
	Polished surface	<input type="checkbox"/>
	max. permitted ambient temperature	0,00 - 60,00 °C