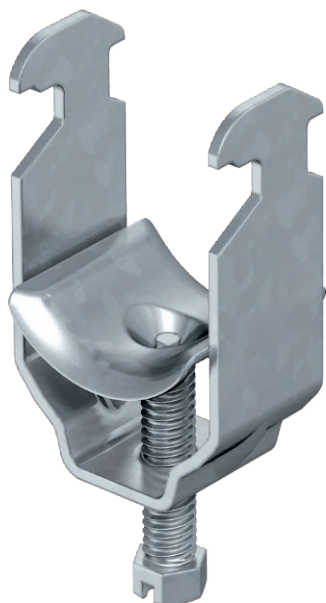


# Technical data sheet

## Clamp clip, single, metal pressure trough

Item no. 1156055



Suitable for all C profile rails with slot width 16–17 mm.  
Clip, bolt and pressure trough made of hot-dip galvanised steel.

Version with welding and/or locknuts for use under difficult circumstances and for shake protection on request.

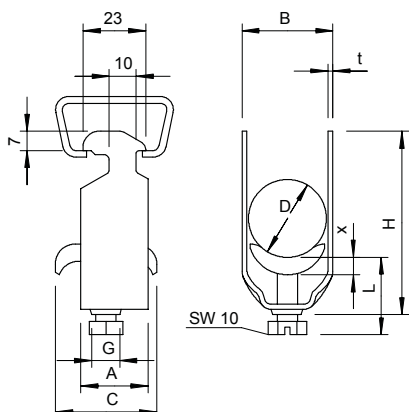


<b>St</b>	Steel
<b>FT</b>	Hot-dip galvanised

### Master data

Item no.	1156055
Type	2056 M 40 FT
Description 1	Clamp clip
Description 2	with metal pressure sump
Dimension	34-40mm
Material	Steel
Material symbol	St
Surface	Hot-dip galvanised
Surface to DIN	DIN EN ISO 1461
Surface symbol	FT
Smallest sales unit (VG)	100 Piece
Weight	8,60 kg/100 pc.

### Technical data



Dimension A	23,00 mm
Dimension B	45,00 mm
Dimension C	35 mm
Dimension G	M8
Dimension H	72,00 mm
Dimension L	44,00 mm
Dimension t	2,00 mm
Dimension x	5,00 mm
Number of cables/pipes	1
Max. tightening torque	5,00 Nm
for 1 cable H	72,00 mm
for 1 cable L	44,00 mm
for pipe diameter	40 mm
for rail with slot width	16,00 - 17,00 mm
Halogen-free	<input type="checkbox"/>
With plastic trough	<input type="checkbox"/>
With metal trough	<input checked="" type="checkbox"/>
Mounting type	Profile rail

# Technical data sheet

Clamp clip, single, metal pressure trough

Item no. 1156055



## Technical data

Impact-resistant	<input type="checkbox"/>
Clamping range D	34,00 - 40,00 mm
Surface addition	hot galvanised
Material addition	Steel