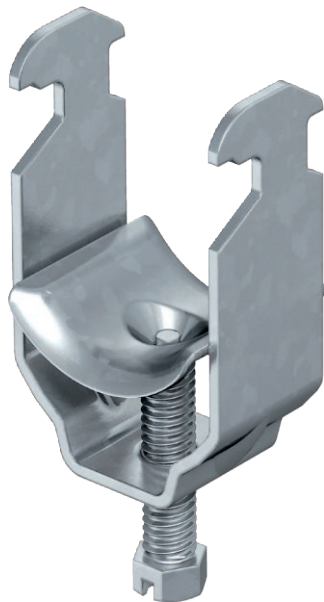


Technical data sheet

Clamp clip, single, metal pressure trough

Item no. 1156012



Suitable for all C profile rails with slot width 16–17 mm.
Clip, bolt and pressure trough made of hot-dip galvanised steel.

Version with welding and/or locknuts for use under difficult circumstances and for shake protection on request.

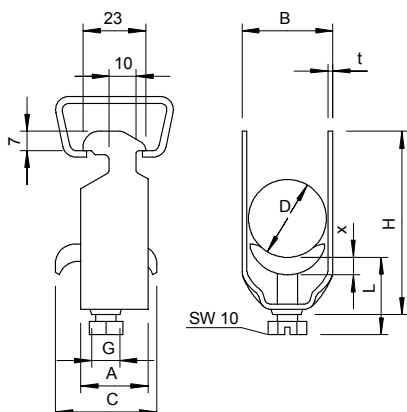


St	Steel
FT	Hot-dip galvanised

Master data

Item no.	1156012
Type	2056 M 16 FT
Description 1	Clamp clip
Description 2	with metal pressure sump
Dimension	12-16mm
Material	Steel
Material symbol	St
Surface	Hot-dip galvanised
Surface to DIN	DIN EN ISO 1461
Surface symbol	FT
Smallest sales unit (VG)	100 Piece
Weight	3,50 kg/100 pc.

Technical data



Dimension A	23,00 mm
Dimension B	20,00 mm
Dimension C	30 mm
Dimension G	M6
Dimension H	44,00 mm
Dimension L	32,50 mm
Dimension t	1,50 mm
Dimension x	3,50 mm
Number of cables/pipes	1
Max. tightening torque	3,00 Nm
for 1 cable H	44,00 mm
for 1 cable L	32,50 mm
for pipe diameter	16 mm
for rail with slot width	16,00 - 17,00 mm
Halogen-free	<input type="checkbox"/>
With plastic trough	<input type="checkbox"/>
With metal trough	<input checked="" type="checkbox"/>
Mounting type	Profile rail

Technical data sheet

Clamp clip, single, metal pressure trough

Item no. 1156012



Technical data

Impact-resistant	<input type="checkbox"/>
Clamping range D	12,00 - 16,00 mm
Surface addition	hot galvanised
Material addition	Steel