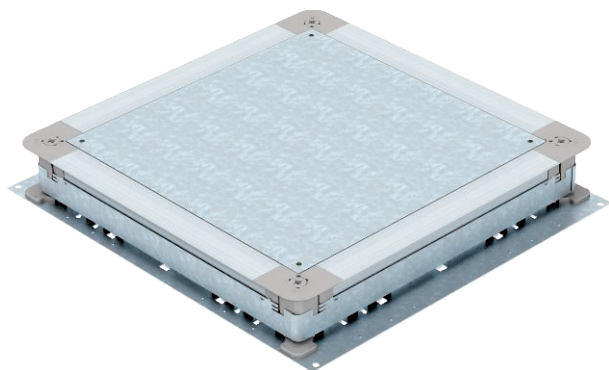


Technical data sheet

UZD350-3 for screed height 70–125 mm

Item no. 7410034



Underfloor junction and branch box for screed-covered underfloor installation ducts with sheet steel side walls. To mount installation units in the mounting lid (to be ordered separately). Height can be infinitely adjusted to the nominal screed height (rapid adjustment possible) and the screed can be worked flush to the screed scraping edge. With noise decoupling option after screed laying and can be used with system accessories, also for heavy-duty application.

Side walls prepared for duct widths of 190, 250 and 350 mm.

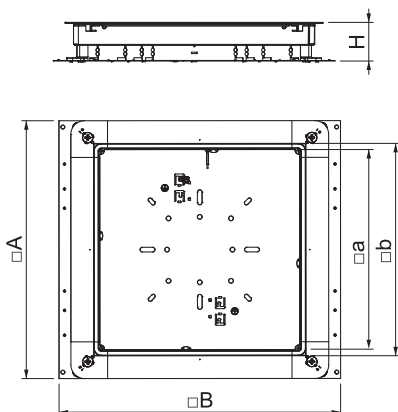


St	Steel
FS	Strip galvanised

Master data

Item no.	7410034
Type	UZD 350-3
Description 1	Junction and branch box
Description 2	for screed height 70-125mm
Dimension	510x467x70
Material	Steel
Material symbol	St
Surface	Strip galvanised
Surface to DIN	DIN EN 10346
Surface symbol	FS
Smallest sales unit (VG)	1 Piece
Weight	590,00 kg/100 pc.

Technical data



Dimension A	467,00 mm
Dimension B	510,00 mm
Dimension a	362,00 mm
Dimension b	383,00 mm
Dimension	467 x 510 x 70 mm
Floor plate	<input checked="" type="checkbox"/>
Cover version	Universal
Seal installation option	<input checked="" type="checkbox"/>
Installation opening for on-floor tank	<input type="checkbox"/>
Decouplable	<input checked="" type="checkbox"/>
Screed height	70-125 mm
For pipe connection	<input type="checkbox"/>
Suitable for screed-flush closed underfloor ducts	<input type="checkbox"/>
Suitable for screed-covered underfloor ducts	<input checked="" type="checkbox"/>
Duct width	190,00 - 350,00 mm
Trunking height	28,00 - 48,00 mm
Minimum screed height	70
Nominal size	350,00 mm
Height-adjustment range	70,00 - 125,00 mm