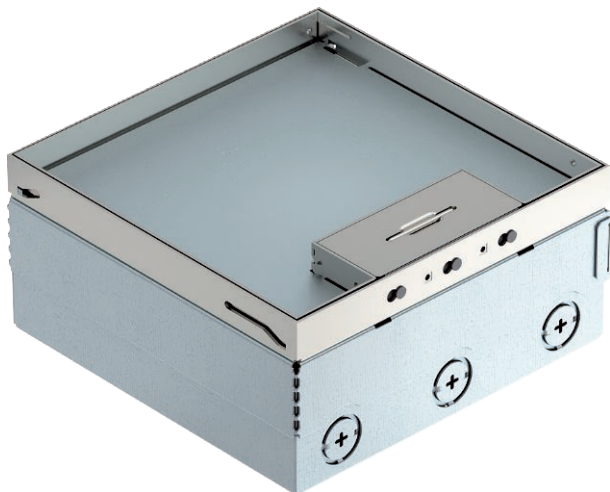


Technical data sheet

UDHOME4 floor box, freely equippable, stainless steel

Item no. 7427232



Square floor box for use in dry-cleaned cavity and screed floors in indoor areas. Installation housing with pre-marked insertion openings for pipes (M25). Cover adjustable to top edge of floor covering using four height-adjustment supports. The minimum installation depth is 95 mm, the height-adjustment range + 30 mm.

Surfaces visible in the floor covering made of stainless steel.

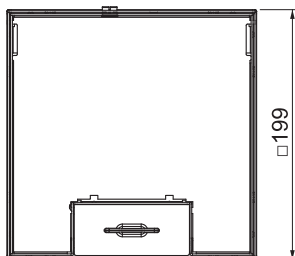
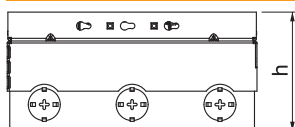


VA Stainless steel, rustproof 1.4301

Master data

Item no.	7427232
Type	UDHOME4 2V
Description 1	Floor box, complete
Description 2	empty
Material	Stainless steel, material no. 1.4301
Material symbol	A2
Smallest sales unit (VG)	1 Piece
Weight	384,00 kg/100 pc.

Technical data



Length	199,00 mm
Width	199,00 mm
Dimension h	95,00 mm
Wide external dimensions	199,00 mm
Wide installation dimensions	205,00 mm
Length of external dimensions	199,00 mm
Length of installation dimensions	205,00 mm
Number of mounting boxes	2
Cable outlet version	Swivellable cord outlet
Floor covering thickness	15,00 mm
Floor covering protection frame	<input type="checkbox"/>
Version for	Square
Screed height	95-110 mm
Floor height	95-125 mm
Suitable for wet care	<input type="checkbox"/>
Suitable for raised floor installation	<input type="checkbox"/>
Suitable for cavity floor installation	<input checked="" type="checkbox"/>
Suitable for underfloor ducts	<input type="checkbox"/>
With floor covering recess	<input checked="" type="checkbox"/>
Height-adjustment range	95,00 - 125,00 mm
Opening mechanism	Handle