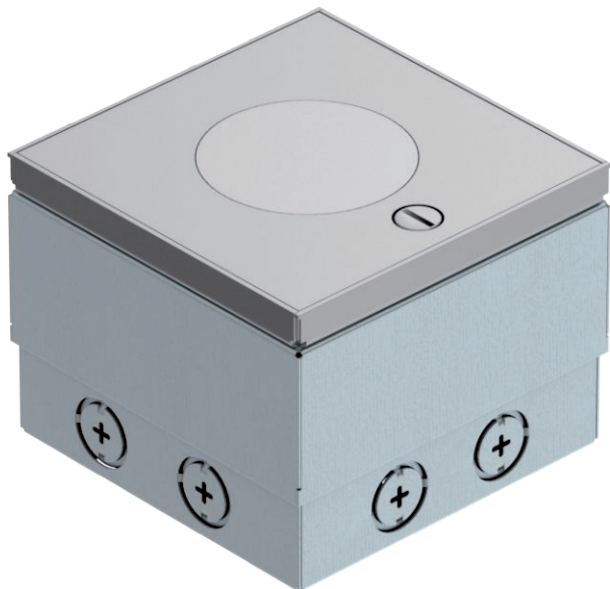


# Technical data sheet

## UDHOME2 floor socket, with tube body, double VDE, stainless steel

Item no. 7368410



Square floor socket for use in wet-care cavity and screed floors in indoor areas. Cable exit for height-adjustable tube body. Installation housing with pre-marked insertion openings for pipes (M20/M25). Cover adjustable to top edge of floor covering using four height-adjustment supports. The minimum installation depth is 110 mm, the height-adjustment range is +25 mm. The load-bearing capacity of 15 kN is only guaranteed when in an unused state.

The scope of delivery contains a double protective contact socket. Up to two modular data sockets (Keystones) can be installed with optional mounting supports.

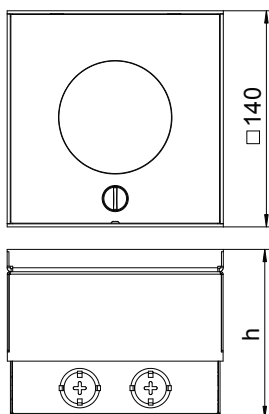


**A2** Stainless steel, rustproof

### Master data

Item no.	7368410
Type	UDHOME2 VF V
Description 1	Floor socket, complete
Description 2	w. tube body, double VDEsocket
Dimension	140x140x110
Material	Stainless steel, material A2
Material symbol	A2
Smallest sales unit (VG)	1 Piece
Weight	323,00 kg/100 pc.

### Technical data



Length	140,00 mm
Width	140,00 mm
Dimension h	110,00 mm
Wide external dimensions	140,00 mm
Wide installation dimensions	140,00 mm
Length of external dimensions	140,00 mm
Length of installation dimensions	140,00 mm
Number of mounting boxes	1
Cable outlet version	Lowerable tube body
Floor covering protection frame	<input type="checkbox"/>
Floor care	Wet
Version for	Square
Installation depth	110,00 mm
Floor height	110-130 mm
Suitable for wet care	<input checked="" type="checkbox"/>
Suitable for raised floor installation	<input checked="" type="checkbox"/>
Suitable for cavity floor installation	<input checked="" type="checkbox"/>
Suitable for underfloor ducts	<input type="checkbox"/>
With floor covering recess	<input type="checkbox"/>
Opening mechanism	Turn buckle