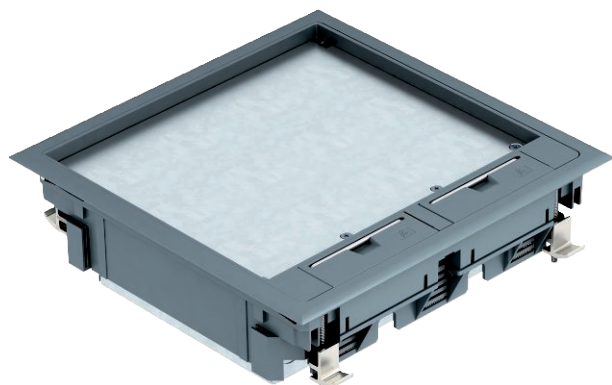


Technical data sheet

Underfloor box with GES9UGE

Item no. 7427474



Square screed socket with GES9 UGE service unit for use in raised floors for indoor use. With pre-marked insertion openings for pipelines (M25) on all four sides. In the as-delivered state, the installation housing is closed with a mounting protection lid. The minimum installation depth is 64 mm.

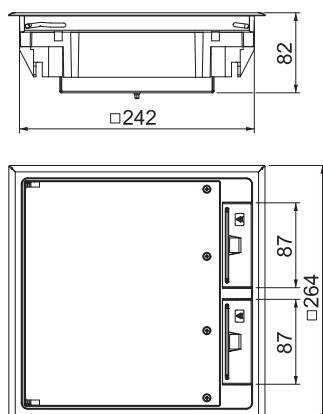


PA Polyamide

Master data

Item no.	7427474
Type	RFB GES9 7011 BS
Description 1	Service outlet
Description 2	with raised floor housing
Dimension	264x264x91
Colour	Iron grey
RAL number	7011
Material	Polyamide
Material symbol	PA
Smallest sales unit (VG)	1 Piece
Weight	290,00 kg/100 pc.

Technical data



Length	264,00 mm
Width	264,00 mm
Number of installable devices	6
Cable outlet version	Swivellable cord outlet
Floor care	Dry
Seal installation option	<input type="checkbox"/>
Suitable for raised floor installation	<input type="checkbox"/>
Suitable for cavity floor installation	<input type="checkbox"/>
Suitable for underfloor ducts	<input type="checkbox"/>
Nominal size for device installation units	9
Opening mechanism	Handle
Frame version	Carpet protection frame
Heavy-duty version	<input type="checkbox"/>