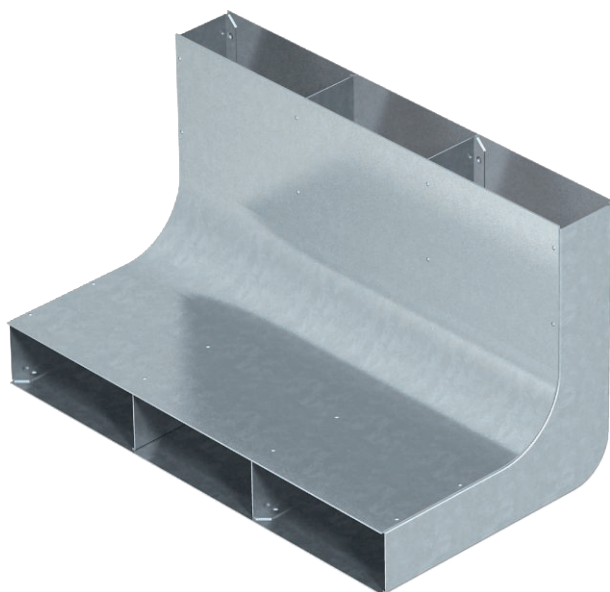


Technical data sheet

Vertical bend, three-compartment, height 48 mm

Item no. 7400664



For vertical direction changes of screed-covered underfloor installation ducts (wall connections, supplies).

An important precondition for correct underfloor installation is the screed structure.

In the case of a screed-covered system, it is important that the screed thickness of the duct is at least 35 mm, to avoid the formation of cracks (DIN 18560).

Screed height: 60 mm only for on-floor connection technology (Telitank), 70 mm or more for underfloor connection technology.



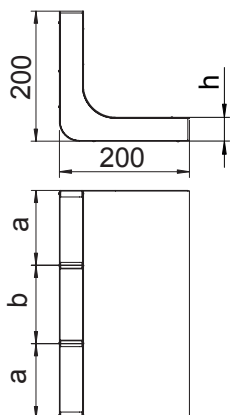
St Steel

FS Strip galvanised

Master data

Item no.	7400664
Type	KV3 35048
Description 1	Vertical bend
Description 2	3 compartments for EÜK
Material	Steel
Material symbol	St
Surface	Strip galvanised
Surface to DIN	DIN EN 10346
Surface symbol	FS
Smallest sales unit (VG)	1 Piece
Weight	296,00 kg/100 pc.

Technical data



Length	200,00 mm
Width	350,00 mm
Height	48,00 mm
Dimension a	120,00 mm
Dimension b	110,00 mm
Dimension h	48,00 mm
Duct width	350,00 mm
Trunking height	48,00 mm
Number of fixed partitions	2
Number of compartments	3,00 pc.
Suitable for screed-flush closed underfloor ducts	<input type="checkbox"/>
Suitable for screed-covered underfloor ducts	<input checked="" type="checkbox"/>
Cross-section, draw a	5.428,00 mm ²
Cross-section, draw b	5.014,00 mm ²