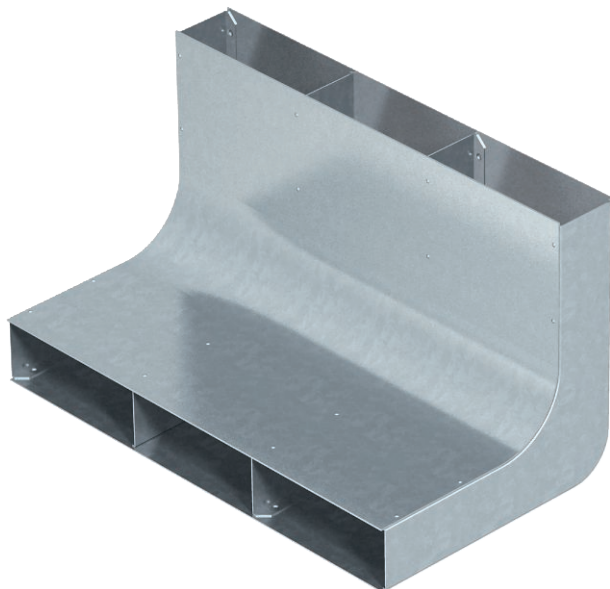


Technical data sheet

Vertical bend, three-compartment, height 48 mm

Item no. 7400652



For vertical direction changes of screed-covered underfloor installation ducts (wall connections, supplies).

An important precondition for correct underfloor installation is the screed structure.

In the case of a screed-covered system, it is important that the screed thickness of the duct is at least 35 mm, to avoid the formation of cracks (DIN 18560).

Screed height: 60 mm only for on-floor connection technology (Telitank), 70 mm or more for underfloor connection technology.



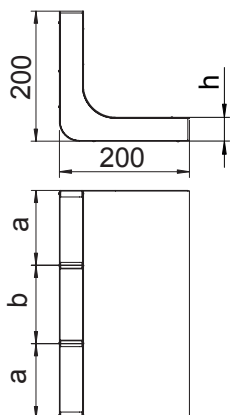
St Steel

FS Strip galvanised

Master data

| | |
|--------------------------|------------------------|
| Item no. | 7400652 |
| Type | KV3 25048 |
| Description 1 | Vertical bend |
| Description 2 | 3 compartments for EÜK |
| Material | Steel |
| Material symbol | St |
| Surface | Strip galvanised |
| Surface to DIN | DIN EN 10346 |
| Surface symbol | FS |
| Smallest sales unit (VG) | 1 Piece |
| Weight | 233,00 kg/100 pc. |

Technical data



| | |
|---|-------------------------------------|
| Length | 200,00 mm |
| Width | 250,00 mm |
| Height | 48,00 mm |
| Dimension a | 90,00 mm |
| Dimension b | 70,00 mm |
| Dimension h | 48,00 mm |
| Duct width | 250,00 mm |
| Trunking height | 48,00 mm |
| Number of fixed partitions | 2 |
| Number of compartments | 3,00 pc. |
| Suitable for screed-flush closed underfloor ducts | <input type="checkbox"/> |
| Suitable for screed-covered underfloor ducts | <input checked="" type="checkbox"/> |
| Cross-section, draw a | 4.048,00 mm ² |
| Cross-section, draw b | 3.174,00 mm ² |