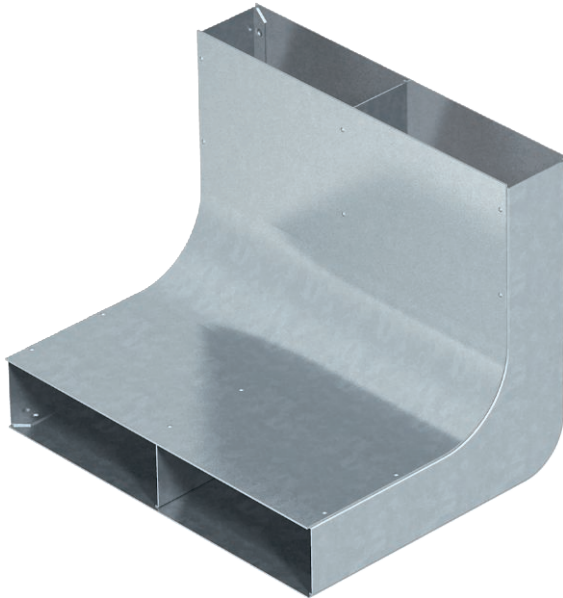


Technical data sheet

Vertical bend, two-compartment, height 48 mm

Item no. 7400640



For vertical direction changes of screed-covered underfloor installation ducts (wall connections, supplies).



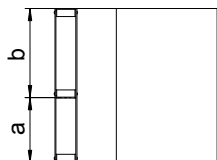
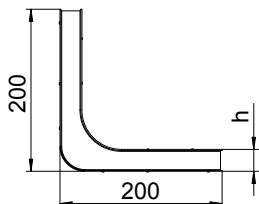
St Steel

FS Strip galvanised

Master data

Item no.	7400640
Type	KV2 25048
Description 1	Vertical bend
Description 2	2 compartments for EÜK
Material	Steel
Material symbol	St
Surface	Strip galvanised
Surface to DIN	DIN EN 10346
Surface symbol	FS
Smallest sales unit (VG)	1 Piece
Weight	215,00 kg/100 pc.

Technical data



Length	200,00 mm
Width	250,00 mm
Height	48,00 mm
Dimension a	110,00 mm
Dimension b	140,00 mm
Dimension h	48,00 mm
Duct width	250,00 mm
Trunking height	48,00 mm
Number of fixed partitions	1
Number of compartments	2,00 pc.
Suitable for screed-flush closed underfloor ducts	<input type="checkbox"/>
Suitable for screed-covered underfloor ducts	<input checked="" type="checkbox"/>
Cross-section, draw a	4.968,00 mm ²
Cross-section, draw b	6.348,00 mm ²