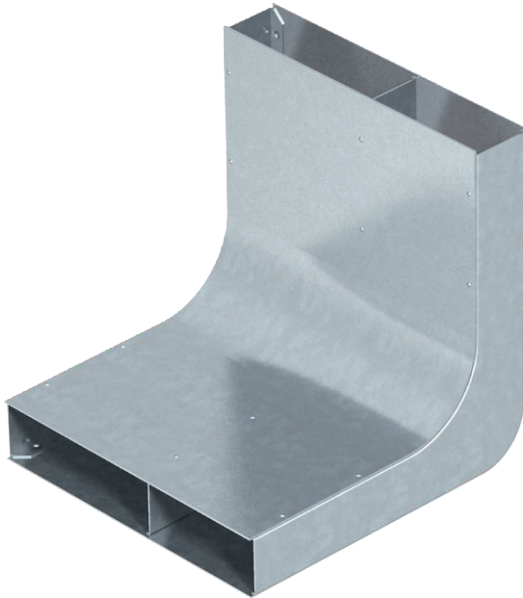


# Technical data sheet

## Vertical bend, two-compartment, height 48 mm

Item no. 7400628



For vertical direction changes of screed-covered underfloor installation ducts (wall connections, supplies).



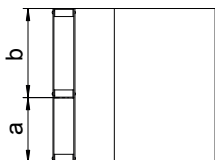
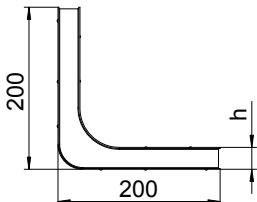
**St** Steel

**FS** Strip galvanised

### Master data

Item no.	7400628
Type	KV2 19048
Description 1	Vertical bend
Description 2	2 compartments for EÜK
Material	Steel
Material symbol	St
Surface	Strip galvanised
Surface to DIN	DIN EN 10346
Surface symbol	FS
Smallest sales unit (VG)	1 Piece
Weight	176,00 kg/100 pc.

### Technical data



Length	200,00 mm
Width	190,00 mm
Height	48,00 mm
Dimension a	80,00 mm
Dimension b	110,00 mm
Dimension h	48,00 mm
Duct width	190,00 mm
Trunking height	48,00 mm
Number of fixed partitions	1
Number of compartments	2,00 pc.
Suitable for screed-flush closed underfloor ducts	<input type="checkbox"/>
Suitable for screed-covered underfloor ducts	<input checked="" type="checkbox"/>
Cross-section, draw a	3.588,00 mm <sup>2</sup>
Cross-section, draw b	4.968,00 mm <sup>2</sup>