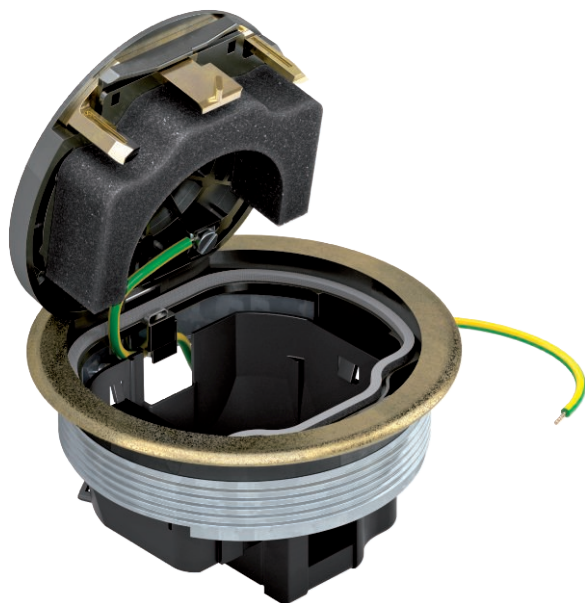


# Technical data sheet

## GESRM2 with protective frame - USB type

Item no. 7405663



Round installation unit with floor covering protection frame for direct installation in the connection socket UDL2-120. When closed, the installation unit can be wet-cleaned. The minimum installation depth is 70 mm.

Cover plate and socket of the Modul 45 series should be ordered separately.

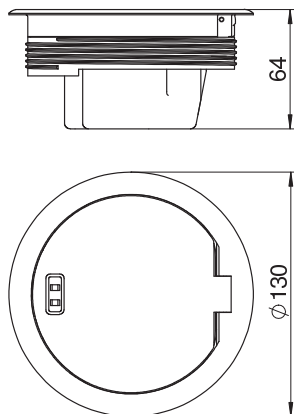


<b>Zn</b>	Die-cast zinc
<b>CuZn 37</b>	Brass-coated

### Master data

Item no.	7405663
Type	GESRMS2
Description 1	Service outlet
Description 2	with prot. frame, old brass
Dimension	130x130x64
Material	Die-cast zinc
Material symbol	Zn
Surface	Brass-coated
Surface symbol	CuZn
Smallest sales unit (VG)	1 Piece
Weight	75,20 kg/100 pc.

### Technical data



External diameter	130,00 mm
Floor covering protection frame	<input checked="" type="checkbox"/>
Floor care	Wet
Version for	Round
Suitable for wet care	<input checked="" type="checkbox"/>
Suitable for raised floor installation	<input type="checkbox"/>
Suitable for cavity floor installation	<input type="checkbox"/>
Suitable for underfloor ducts	<input checked="" type="checkbox"/>
With floor covering recess	<input type="checkbox"/>
Opening mechanism	Locking slider
Protection rating (IP) when unused	IP45