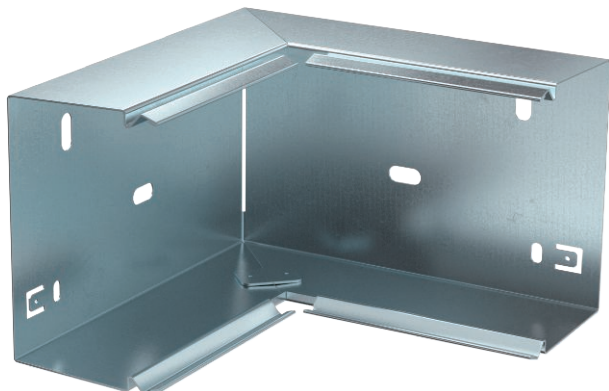


Technical data sheet

Internal corner, for cable duct type LKM 60100

Item no. 6248144



Internal corner for changing the direction of the LKM trunking.

Equipotential bonding without additional aids, between base and cover



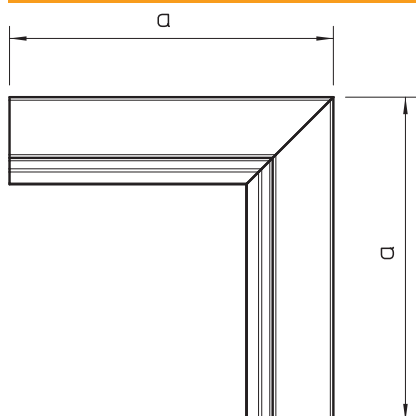
St Steel

FS Strip galvanised

Master data

Item no.	6248144
Type	LKM I60100FS
Description 1	Internal corner
Dimension	60x100mm
Material	Steel
Material symbol	St
Surface	Strip galvanised
Surface to DIN	DIN EN 10346
Surface symbol	FS
Smallest sales unit (VG)	1 Piece
Weight	39,40 kg/100 pc.

Technical data



Length	160,00 mm
Width	100,00 mm
Height	64,00 mm
Dimension a	160,00 mm
Version for	Base
Fastening type	Base perforation
for duct dimension	60 x 100
Suitable for maintaining electrical function	<input checked="" type="checkbox"/>
Halogen-free	<input checked="" type="checkbox"/>
Trunking height	64,00 mm
Trunking height	64,00 mm
Protective film	<input type="checkbox"/>
Angle range	90,00 °