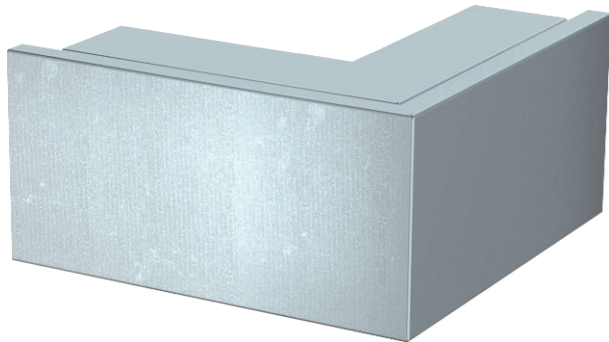


# Technical data sheet

## External corner, for cable duct type LKM 60100

Item no. 6248063



External corner including cover for changing the direction of the LKM ducts.  
Equipotential bonding without additional aids, between base and cover



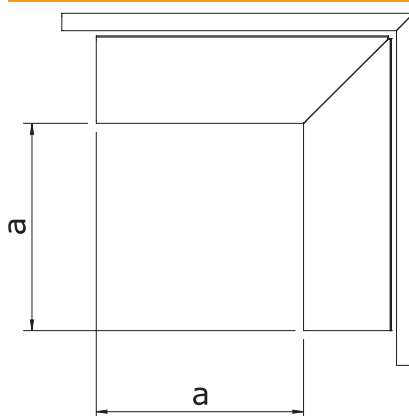
**St** Steel

**FS** Strip galvanised

### Master data

Item no.	6248063
Type	LKM A60100FS
Description 1	External corner
Description 2	with cover
Dimension	60x100mm
Material	Steel
Material symbol	St
Surface	Strip galvanised
Surface to DIN	DIN EN 10346
Surface symbol	FS
Smallest sales unit (VG)	1 Piece
Weight	73,10 kg/100 pc.

### Technical data



Length	120,00 mm
Width	100,00 mm
Height	64,00 mm
Dimension a	120,00 mm
Version for	Base and cover
Fastening type	Base perforation
for duct dimension	60 x 100
Suitable for maintaining electrical function	<input checked="" type="checkbox"/>
Halogen-free	<input checked="" type="checkbox"/>
Trunking height	64,00 mm
Trunking height	64,00 mm
Protective film	<input type="checkbox"/>
System size	60 x 100
Angle range	90,00 °