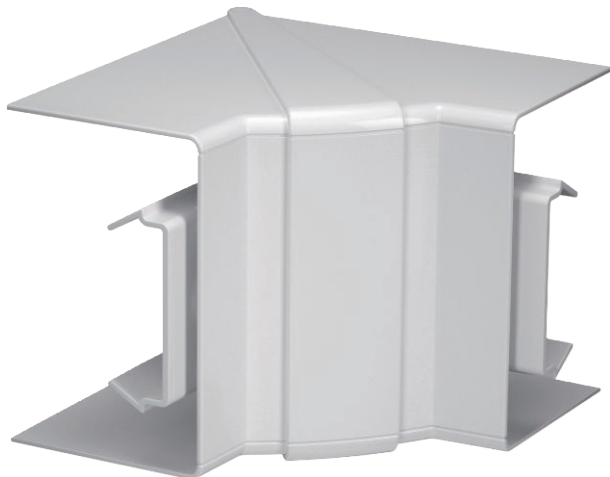


# Technical data sheet

## Internal corner hood, for Rapid 80 device installation trunking, type GK-70110

Item no. 6274282



Internal corner cover made of halogen-free PC/ABS for changing the direction of Rapid 80 device installation trunking of the GK, GKH, GS and GA systems. The fittings can be variably adjusted between 85° and 95° and can be used in symmetrical and asymmetrical trunking.



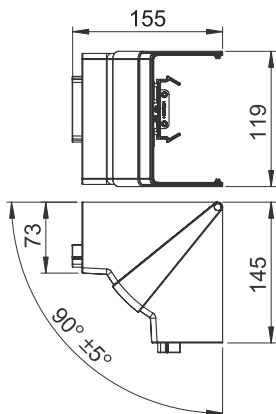
PC/  
ABS

Polycarbonate/acrylonitrile butadiene styrene

### Master data

Item no.	6274282
Type	GK-IH70110LGR
Description 1	Internal corner
Description 2	variable
Dimension	70x110mm
Colour	Light grey
RAL number	7035
Material	Polycarbonate/acrylonitrile-butadiene-styrene
Material symbol	PC/ABS
Smallest sales unit (VG)	1 Piece
Weight	14,20 kg/100 pc.

### Technical data



Length	145,00 mm
Width	119,00 mm
Height	155,00 mm
Number of covers	1
Version for	Hood fitting
Shape	Symmetrical
for duct width	110,00 mm
for trunking height	70,00 mm
Halogen-free	<input checked="" type="checkbox"/>
Cable retaining clip	<input type="checkbox"/>
Duct connector	<input type="checkbox"/>
Cover mounting type	Cross-over
Mounting perforation in base	<input type="checkbox"/>
Cover width	0 mm
Cover width 2	0,00 mm
Cover width 3	0,00 mm
Protective film	<input type="checkbox"/>
Angle range	85,00 - 95,00 °