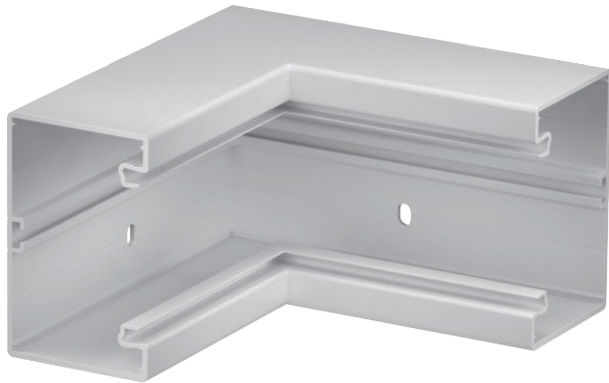


# Technical data sheet

Internal corner, for device installation trunking Rapid  
80 type GK-70110  
Item no. 6274342



Internal corner for changing the direction of the GK device installation trunking.

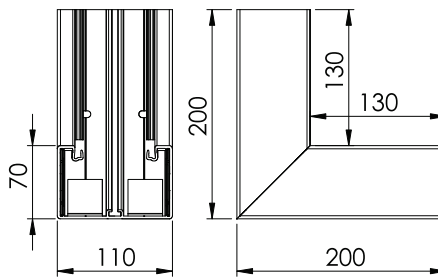


**PVC** Polyvinylchloride

## Master data

Item no.	6274342
Type	GK-I70110LGR
Description 1	Internal corner
Dimension	70x110mm
Colour	Light grey
RAL number	7035
Material	Polyvinylchloride
Material symbol	PVC
Smallest sales unit (VG)	1 Piece
Weight	100,00 kg/100 pc.

## Technical data



Width	110,00 mm
Height	70,00 mm
Number of covers	1
Version for	Base
Shape	Symmetrical
Halogen-free	<input type="checkbox"/>
Cable retaining clip	<input type="checkbox"/>
Duct connector	<input type="checkbox"/>
Cover mounting type	Internal
Mounting perforation in base	<input checked="" type="checkbox"/>
Cover width	76,5 mm
Cover width 2	0,00 mm
Cover width 3	0,00 mm
Protective film	<input checked="" type="checkbox"/>
Angle range	90,00 - 90,00 °