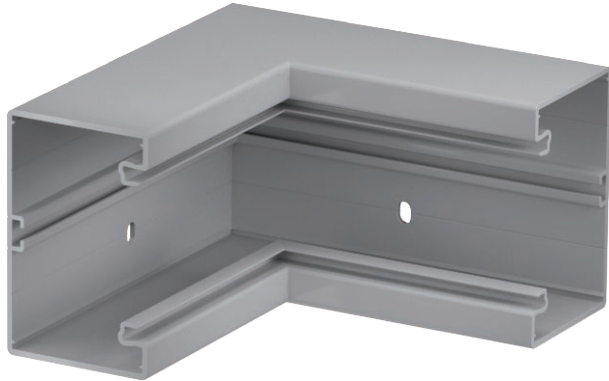


Technical data sheet

Internal corner, for device installation trunking Rapid
80 type GK-70110
Item no. 6274346



Internal corner for changing the direction of the GK device installation trunking.

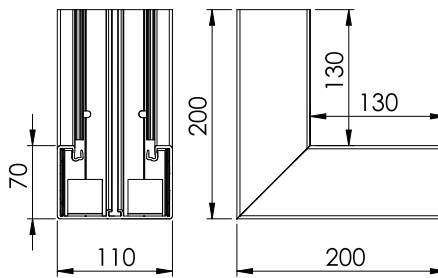


PVC Polyvinylchloride

Master data

Item no.	6274346
Type	GK-I70110GR
Description 1	Internal corner
Dimension	70x110mm
Colour	Stone grey
RAL number	7030
Material	Polyvinylchloride
Material symbol	PVC
Smallest sales unit (VG)	1 Piece
Weight	100,00 kg/100 pc.

Technical data



Width	110,00 mm
Height	70,00 mm
Number of covers	1
Version for	Base
Shape	Symmetrical
Halogen-free	<input type="checkbox"/>
Cable retaining clip	<input type="checkbox"/>
Duct connector	<input type="checkbox"/>
Cover mounting type	Internal
Mounting perforation in base	<input checked="" type="checkbox"/>
Cover width	76,5 mm
Cover width 2	0,00 mm
Cover width 3	0,00 mm
Protective film	<input checked="" type="checkbox"/>
Angle range	90,00 - 90,00 °