

Technical data sheet

External corner cover

Item no. 6113230



External corner for changing the direction of Rapid 45-2 device installation trunking. The fittings can be adjusted between 80–110°.



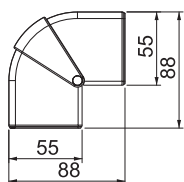
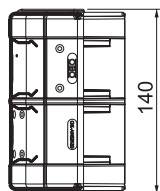
PC/
ABS

Polycarbonate/acrylonitrile butadiene styrene

Master data

Item no.	6113230
Type	GK-AH53130RW
Description 1	External corner
Description 2	variable
Dimension	140x88x88
Colour	Pure white
RAL number	9010
Material	Polycarbonate/acrylonitrile-butadiene-styrene
Material symbol	PC/ABS
Smallest sales unit (VG)	1 Piece
Weight	8,44 kg/100 pc.

Technical data



Number of covers	1
Version for	Hood fitting
for duct dimension	53 x 130 mm
for duct width	130,00 mm
for trunking height	53,00 mm
Halogen-free	<input checked="" type="checkbox"/>
Cable retaining clip	<input type="checkbox"/>
Duct connector	<input type="checkbox"/>
Cover mounting type	Cross-over
Mounting perforation in base	<input type="checkbox"/>
Cover width	0 mm
Cover width 2	0,00 mm
Cover width 3	0,00 mm
Protective film	<input type="checkbox"/>
Symmetrical	<input checked="" type="checkbox"/>
Angle range	80,00 - 110,00 °