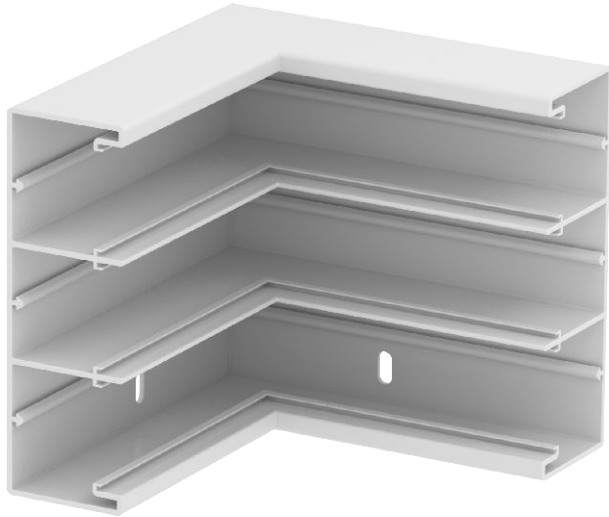


Technical data sheet

Internal corner, for device installation trunking Rapid
45-2 type GK-53160
Item no. 6116203



Rigid 90° internal corner for changing the direction of the Rapid 45 three-compartment device installation trunking.

Modul 45 devices can be clicked on directly.

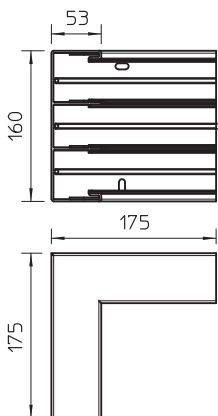


PVC Polyvinylchloride

Master data

Item no.	6116203
Type	GEK-KIS53160-3
Description 1	Internal corner
Description 2	rigid form
Dimension	53x160mm
Colour	Pure white
RAL number	9010
Material	Polyvinylchloride
Material symbol	PVC
Smallest sales unit (VG)	1 Piece
Weight	48,10 kg/100 pc.

Technical data



Length	175,00 mm
Width	160,00 mm
Height	53,00 mm
Number of covers	3
Version for	Base
Shape	Symmetrical
for duct dimension	53 x 100 mm
for duct width	100,00 mm
for trunking height	53,00 mm
Halogen-free	<input type="checkbox"/>
Cable retaining clip	<input type="checkbox"/>
Duct connector	<input type="checkbox"/>
Cover mounting type	Internal
Mounting perforation in base	<input checked="" type="checkbox"/>
Cover width 2	45,00 mm
Cover width 3	45,00 mm
Protective film	<input type="checkbox"/>
Angle range	90,00 - 90,00 °