

# Technical data sheet

## US 5 support

Item no. 6341527



U support of dimensions 50 x 50 mm with welded head plate.

For fastening to horizontal concrete ceilings and steel girders. For bracket widths of 400 mm or more, or if the bracket is mounted at the end of a suspended support, we recommend the use of the spacer, type DSK 45.

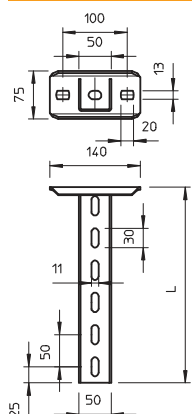


- St** Steel
- FT** Hot-dip galvanised

### Master data

|                          |                        |
|--------------------------|------------------------|
| Item no.                 | 6341527                |
| Type                     | US 5 K 20 FT           |
| Description 1            | Support                |
| Description 2            | with welded head plate |
| Dimension                | 50x50x200              |
| Material                 | Steel                  |
| Material symbol          | St                     |
| Surface                  | Hot-dip galvanised     |
| Surface to DIN           | DIN EN ISO 1461        |
| Surface symbol           | FT                     |
| Smallest sales unit (VG) | 1 Piece                |
| Weight                   | 85,00 kg/100 pc.       |

### Technical data



|   |                                     |
|---|-------------------------------------|
| Length  | 200,00 mm                           |
| Width   | 50,00 mm                            |
| Height  | 50,00 mm                            |
| Dimension L   | 200,00 mm                           |
| Dimension   | 50 x 50 x 2,5 mm                    |
| Version   | U profile                           |
| Bracket length 200  | 5,75 kN                             |
| Bracket length 400  | 3,10 kN                             |
| Bracket length 600  | 2,20 kN                             |
| EPD article   | <input checked="" type="checkbox"/> |
| Suitable for maintaining electrical function                      | <input checked="" type="checkbox"/> |
| Material thickness  | 2,50 mm                             |
| With toothing   | <input type="checkbox"/>            |
| Rustproof steel, pickled  | <input type="checkbox"/>            |
| Strain relief (dependent on the thickness of the ceiling profile) | 10,00 kN                            |

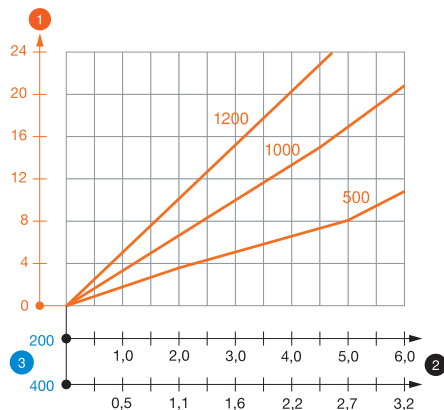
# Technical data sheet

## US 5 support

Item no. 6341527



### Load charts



### Load diagram, U support, type US 5 K

- 1 Bending of the end of the suspended support at permitted bracket load
- 2 Permitted bracket load in kN without man load
- 3 Bracket length in mm
- Load curves with support lengths in mm

### Characteristic anchor load values for US 5 K support

#### Single-sided load

| Anchor type      | Max. load F [kN]   |      |      |      |
|------------------|--------------------|------|------|------|
|                  | Bracket width [mm] |      |      |      |
|                  | 110                | 210  | 310  | 410  |
| BZ-U 10-10-30/90 | 1,30               | 2,75 | 2,20 | 1,80 |
| BZ 12-15-35/110  | 5,75               | 4,75 | 3,85 | 3,25 |

#### Double-sided load

| Anchor type      | Max. load F [kN]   |       |      |      |      |      |
|------------------|--------------------|-------|------|------|------|------|
|                  | Bracket width [mm] |       |      |      |      |      |
|                  | 110                | 210   | 310  | 410  | 510  | 610  |
| BZ-U 10-10-30/90 | 6,00               | 5,80  | 5,00 | 4,50 | 3,80 | 1,75 |
| BZ 12-15-35/110  | 10,00              | 10,00 | 9,00 | 8,00 | 6,75 | 5,50 |

Max. total load  $F = \text{cable weight} + \text{cable tray} + \text{bracket} + \text{support}$ . The tabular values for double-sided loads take the available axis spacing  $a_i = 10 \text{ cm}$  into account. The load capacity values increase considerably when used in uncracked concrete. The values given are based on concrete of strength class C20/25. Observe the installation conditions of the DIBt approval (anchors).

### Characteristic anchor load values for US 5 K support

| T1 | Single-sided load |                    |      |      |      |
|----|-------------------|--------------------|------|------|------|
| T2 |                   | Max. load F [kN]   |      |      |      |
| T3 |                   | Bracket width [mm] |      |      |      |
| T4 | Anchor type       | 110                | 210  | 310  | 410  |
|    | BZ-U 10-10-30/90  | 1,3                | 2,75 | 2,2  | 1,8  |
|    | BZ 12-15-35/110   | 5,75               | 4,75 | 3,85 | 3,25 |