

Technical data sheet

US 5 support

Item no. 6341624



U support of dimensions 50 x 50 mm with welded head plate.

For fastening to horizontal concrete ceilings and steel girders. For bracket widths of 400 mm or more, or if the bracket is mounted at the end of a suspended support, we recommend the use of the spacer, type DSK 45.



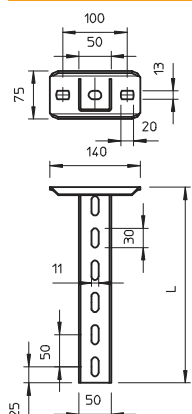
St Steel

FT Hot-dip galvanised

Master data

Item no.	6341624
Type	US 5 K 110 FT
Description 1	Support
Description 2	with welded head plate
Dimension	50x50x1100
Material	Steel
Material symbol	St
Surface	Hot-dip galvanised
Surface to DIN	DIN EN ISO 1461
Surface symbol	FT
Smallest sales unit (VG)	1 Piece
Weight	311,00 kg/100 pc.

Technical data



Length	1.100,00 mm
Width	50,00 mm
Height	50,00 mm
Dimension L	1.100,00 mm
Dimension	50 x 50 x 2,5 mm
Version	U profile
Bracket length 200	4,00 kN
Bracket length 400	2,20 kN
Bracket length 600	1,70 kN
EPD article	<input checked="" type="checkbox"/>
Suitable for maintaining electrical function	<input checked="" type="checkbox"/>
Material thickness	2,50 mm
With toothing	<input type="checkbox"/>
Rustproof steel, pickled	<input type="checkbox"/>
Strain relief (dependent on the thickness of the ceiling profile)	10,00 kN

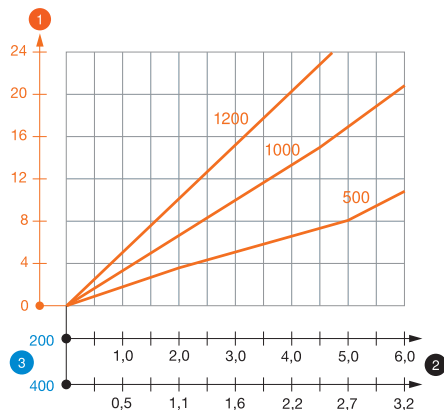
Technical data sheet

US 5 support

Item no. 6341624



Load charts



Load diagram, U support, type US 5 K

- 1 Bending of the end of the suspended support at permitted bracket load
- 2 Permitted bracket load in kN without man load
- 3 Bracket length in mm
- Load curves with support lengths in mm

Characteristic anchor load values for US 5 K support

Single-sided load

		Max. load F [kN]			
		Bracket width [mm]			
	Anchor type	110	210	310	410
	BZ-U 10-10-30/90	1,30	2,75	2,20	1,80
	BZ 12-15-35/110	5,75	4,75	3,85	3,25

Double-sided load

		Max. load F [kN]					
		Bracket width [mm]					
	Anchor type	110	210	310	410	510	610
	BZ-U 10-10-30/90	6,00	5,80	5,00	4,50	3,80	1,75
	BZ 12-15-35/110	10,00	10,00	9,00	8,00	6,75	5,50

Max. total load F = cable weight + cable tray + bracket + support. The tabular values for double-sided loads take the available axis spacing $a_i = 10$ cm into account. The load capacity values increase considerably when used in uncracked concrete. The values given are based on concrete of strength class C20/25. Observe the installation conditions of the DIBt approval (anchors).

Characteristic anchor load values for US 5 K support

T1	Single-sided load				
T2		Max. load F [kN]			
T3		Bracket width [mm]			
T4	Anchor type	110	210	310	410
	BZ-U 10-10-30/90	1,3	2,75	2,2	1,8
	BZ 12-15-35/110	5,75	4,75	3,85	3,25