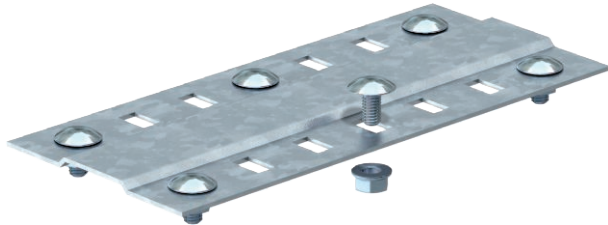


# Technical data sheet

## Joint plate

Item no. 7070233



Wide joint plate for use in all cable trays and wide span cable trays.  
Including appropriate fastening material.



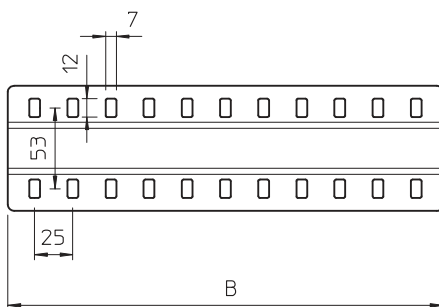
<b>St</b>	Steel
<b>FS</b>	Strip galvanised

Product text, scope of delivery	For function maintenance at a width of 100 mm, the quantity of supplied M6 truss-head bolts should be increased to four, whilst for widths 200 and 300 mm, it should be increased to six.
---------------------------------	---

### Master data

Item no.	7070233
Type	SSLB 600 FS
Description 1	Joint plate
Description 2	wide, with 6 fastenings
Dimension	B600mm
Material	Steel
Material symbol	St
Surface	Strip galvanised
Surface to DIN	DIN EN 10346
Surface symbol	FS
Smallest sales unit (VG)	20 Piece
Weight	58,00 kg/100 pc.

### Technical data



Length	600,00 mm
Width	585,00 mm
Width	24,00 in
Height	4,00 mm
Side height	35,00 mm
Dimension B	600,00 mm
Version	Joint plate
Quantity of bolts	6,00 pc.
Plate thickness	1,50 mm
Suitable for cable tray	<input checked="" type="checkbox"/>
Suitable for mesh cable tray	<input type="checkbox"/>
Suitable for cable ladder	<input type="checkbox"/>
Suitable for maintaining electrical function	<input type="checkbox"/>
Adjustable connector, horizontal	<input type="checkbox"/>
Adjustable connector, vertical	<input type="checkbox"/>
Rustproof steel, pickled	<input type="checkbox"/>
Connection type	Screw connector
Wide-span version	<input checked="" type="checkbox"/>