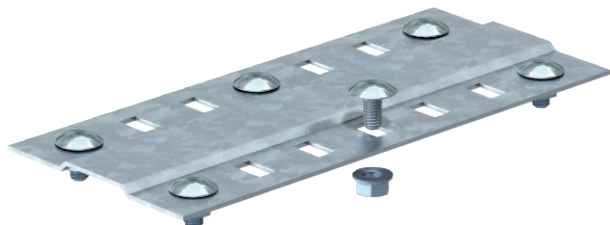


Technical data sheet

Joint plate

Item no. 7070221



Wide joint plate for use in all cable trays and wide span cable trays.
Including appropriate fastening material.



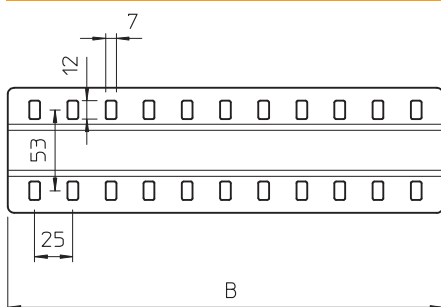
St	Steel
FS	Strip galvanised

Product text, scope of delivery	For function maintenance at a width of 100 mm, the quantity of supplied M6 truss-head bolts should be increased to four, whilst for widths 200 and 300 mm, it should be increased to six.
---------------------------------	---

Master data

Item no.	7070221
Type	SSLB 400 FS
Description 1	Joint plate
Description 2	wide, with 4 fastenings
Dimension	B400mm
Material	Steel
Material symbol	St
Surface	Strip galvanised
Surface to DIN	DIN EN 10346
Surface symbol	FS
Smallest sales unit (VG)	20 Piece
Weight	38,20 kg/100 pc.

Technical data



Length	400,00 mm
Width	385,00 mm
Width	16,00 in
Height	4,00 mm
Side height	35,00 mm
Dimension B	400,00 mm
Version	Joint plate
Quantity of bolts	4,00 pc.
Plate thickness	1,50 mm
Suitable for cable tray	<input checked="" type="checkbox"/>
Suitable for mesh cable tray	<input type="checkbox"/>
Suitable for cable ladder	<input type="checkbox"/>
Suitable for maintaining electrical function	<input checked="" type="checkbox"/>
Adjustable connector, horizontal	<input type="checkbox"/>
Adjustable connector, vertical	<input type="checkbox"/>
Rustproof steel, pickled	<input type="checkbox"/>
Connection type	Screw connector
Wide-span version	<input checked="" type="checkbox"/>