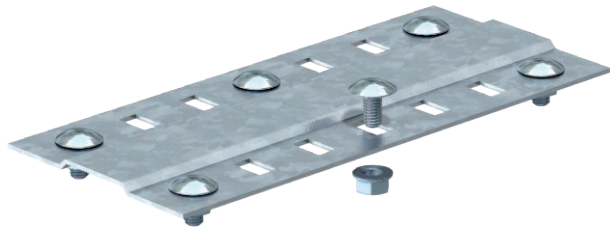


# Technical data sheet

## Joint plate

Item no. 7070213



Wide joint plate for use in all cable trays and wide span cable trays.  
Including appropriate fastening material.



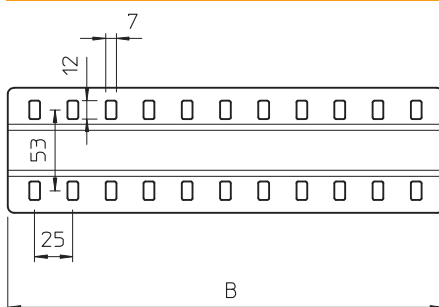
- St** Steel
- FS** Strip galvanised

Product text, scope of delivery | For function maintenance at a width of 100 mm, the quantity of supplied M6 truss-head bolts should be increased to four, whilst for widths 200 and 300 mm, it should be increased to six.

### Master data

Item no.	7070213
Type	SSLB 200 FS
Description 1	Joint plate
Description 2	wide, with 2 fastenings
Dimension	B200mm
Material	Steel
Material symbol	St
Surface	Strip galvanised
Surface to DIN	DIN EN 10346
Surface symbol	FS
Smallest sales unit (VG)	20 Piece
Weight	18,50 kg/100 pc.

### Technical data



Length	200,00 mm
Width	185,00 mm
Width	8,00 in
Height	4,00 mm
Side height	35,00 mm
Dimension B	200,00 mm
Version	Joint plate
Quantity of bolts	2,00 pc.
Plate thickness	1,50 mm
Suitable for cable tray	<input checked="" type="checkbox"/>
Suitable for mesh cable tray	<input type="checkbox"/>
Suitable for cable ladder	<input type="checkbox"/>
Suitable for maintaining electrical function	<input checked="" type="checkbox"/>
Adjustable connector, horizontal	<input type="checkbox"/>
Adjustable connector, vertical	<input type="checkbox"/>
Rustproof steel, pickled	<input type="checkbox"/>
Connection type	Screw connector
Wide-span version	<input checked="" type="checkbox"/>