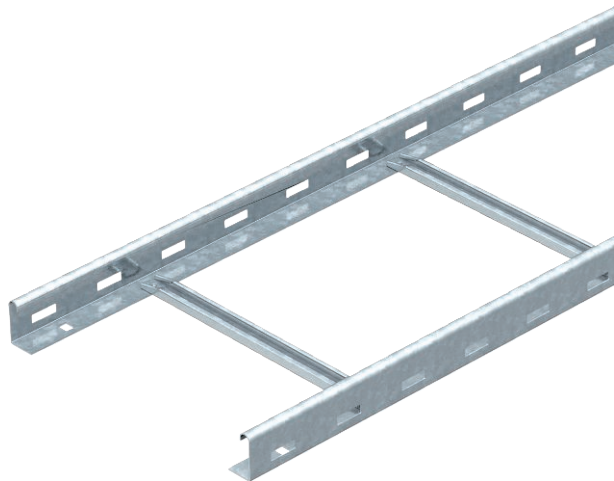


Technical data sheet

Cable ladder SLG 45, 3 m

Item no. 6200552



Cable ladder with perforated side rail of side height 45 mm with riveted C profile rungs, open in an upwards direction.

The cable ladder is shipped folded up.

You can find the appropriate U clamp of type 2056N in the vertical ladder systems chapter.

Magnetic shield insulation without cover 10 dB, with cover 15 dB.

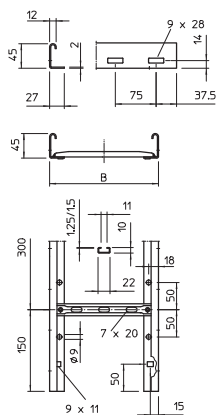


St	Steel
FS	Strip galvanised

Master data

Item no.	6200552
Type	SLG 460 NS 3 FS
Description 1	Cable ladder
Description 2	heavy, perforated, NS rung
Dimension	45x600x3000
Material	Steel
Material symbol	St
Surface	Strip galvanised
Surface to DIN	DIN EN 10346
Surface symbol	FS
Smallest sales unit (VG)	3 m
Weight	354,00 kg/100 m

Technical data



Length	3.000,00 mm
Width	600,00 mm
Height	45,00 mm
Side height	45,00 mm
Dimension B	600,00 mm
Dimension	45x600x3000 mm
Side wall version	Profile (open)
Rung version	Profile perforated
Side rail version	Flat profile
Fastening of rung	Blind riveted
Suitable for maintaining electrical function	<input type="checkbox"/>
Rail thickness	2,00 mm
Usable cross-section	20.800,00 mm ²
Usable cross-section	208,00 cm ²
Rustproof steel, pickled	<input type="checkbox"/>
Side perforation	<input checked="" type="checkbox"/>
Rung distance	300,00 mm
Wide-span version	<input type="checkbox"/>

Appr. load:

Support spacing 1.5 m	2,75 kN/m
Support spacing 2.0 m	2,00 kN/m

Technical data sheet

Cable ladder SLG 45, 3 m

Item no. 6200552

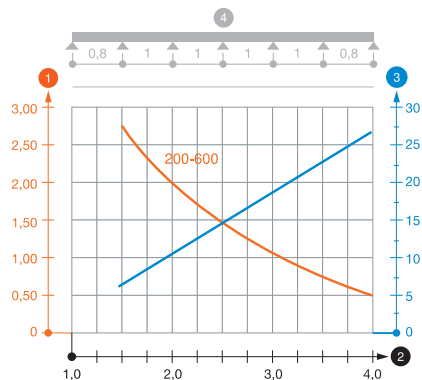


Technical data

Appr. load:

Support spacing 3.0 m	1,00 kN/m
Support spacing 4.0 m	0,55 kN/m

Load diagram, cable ladder, type SLG 45 NS



- 1 Permitted cable tray/ladder load in kN/m without man load
 - 2 Support width in m
 - 3 Rail bend in mm at permitted kN/m
 - 4 Load scheme during testing
- Load curve with cable tray/ladder width in mm
— Strut bend curve according to support width