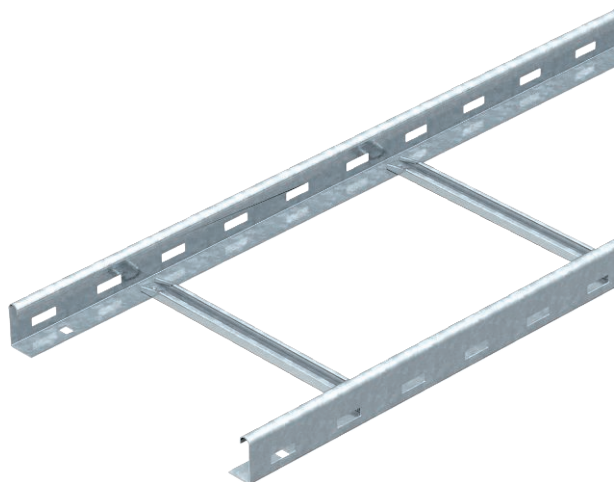


Technical data sheet

Cable ladder SLG 45, 6 m

Item no. 6200649



Cable ladder with perforated side rail of side height 45 mm with riveted C profile rungs, open in an upwards direction.



St	Steel
FT	Hot-dip galvanised

Additional product text, instruction	The cable ladder is shipped folded up. You can find the appropriate U clamp of type 2056N in the vertical ladder systems chapter.
Additional product text 1	Magnetic shield insulation without cover 10 dB, with cover 15 dB.

Master data

Item no.	6200649
Type	SLG 430 NS 6 FT
Description 1	Cable ladder
Description 2	heavy, perforated, NS rung
Dimension	45x300x6000
Material	Steel
Material symbol	St
Surface	Hot-dip galvanised
Surface to DIN	DIN EN ISO 1461
Surface symbol	FT
Smallest sales unit (VG)	6,00 m
Weight	310,70 kg/100 m

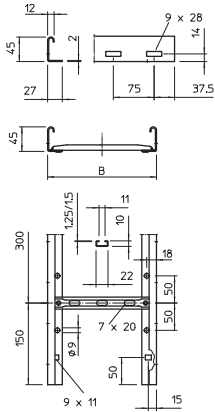
Technical data sheet

Cable ladder SLG 45, 6 m

Item no. 6200649



Technical data

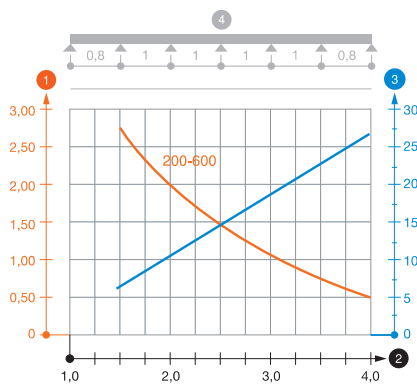


Length	6,000,00 mm
Width	300,00 mm
Height	45,00 mm
Side height	45,00 mm
Dimension	45x300x6000 mm
Side wall version	Profile (open)
Rung version	Profile perforated
Side rail version	Flat profile
Fastening of rung	Blind riveted
Suitable for maintaining electrical function	<input type="checkbox"/>
Rail thickness	2,00 mm
Usable cross-section	10.300,00 mm ²
Usable cross-section	103,00 cm ²
Rustproof steel, pickled	<input type="checkbox"/>
Side perforation	<input checked="" type="checkbox"/>
Rung distance	300,00 mm
Wide-span version	<input type="checkbox"/>

Appr. load:

Support spacing 1.5 m	2,75 kN/m
Support spacing 2.0 m	2,00 kN/m
Support spacing 3.0 m	1,00 kN/m
Support spacing 4.0 m	0,55 kN/m

Appr. load:



Load diagram, cable ladder, type SLG 45 NS

- 1 Permitted cable tray/ladder load in kN/m without man load
- 2 Support width in m
- 3 Rail bend in mm at permitted kN/m
- 4 Load scheme during testing
- Load curve with cable tray/ladder width in mm
- Strut bend curve according to support width