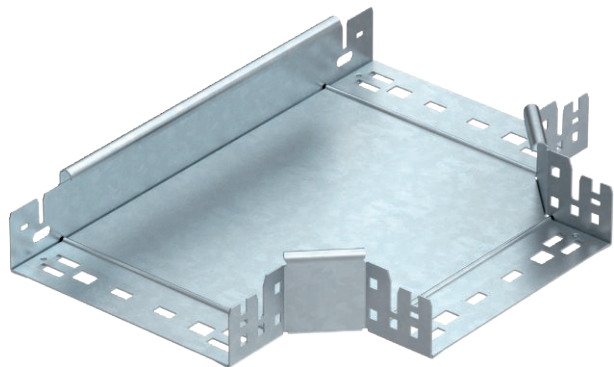


# Technical data sheet

## Magic 60 T branch piece

Item no. 6041344



Tee branch piece with quick connector system. For all cable tray types of 60 mm side height.

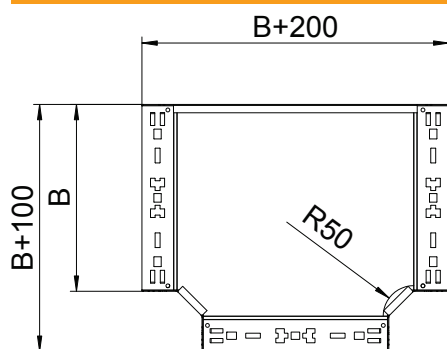


- St** Steel
- FT** Hot-dip galvanised

### Master data

Item no.	6041344
Type	RTM 620 FT
Description 1	T-branch piece
Description 2	with quick connector
Dimension	60x200
Material	Steel
Material symbol	St
Surface	Hot-dip galvanised
Surface to DIN	DIN EN ISO 1461
Surface symbol	FT
Smallest sales unit (VG)	1 Piece
Weight	161,50 kg/100 pc.

### Technical data



Width	200,00 mm
Side height	60,00 mm
Plate thickness	1,25 mm
Dimension B	200,00 mm
Connector version	Integrated connector
Shape	T piece horizontal
Dimension	60x200 mm
Suitable for maintaining electrical function	<input type="checkbox"/>
Rail thickness	1,25 mm
Material thickness, floor plate	1,25 mm
NATO hole pattern	<input type="checkbox"/>
Rustproof steel, pickled	<input type="checkbox"/>
Wide-span version	<input type="checkbox"/>