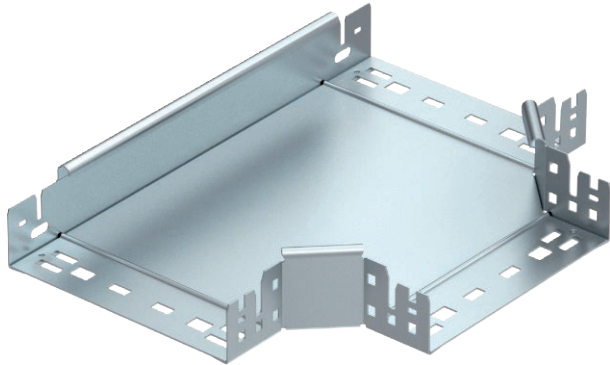


Technical data sheet

Magic 60 T branch piece

Item no. 6041324



Tee branch piece with quick connector system. For all cable tray types of 60 mm side height.



- St** Steel
- FS** Strip galvanised

Master data

Item no.	6041324
Type	RTM 620 FS
Description 1	T-branch piece
Description 2	with quick connector
Dimension	60x200
Material	Steel
Material symbol	St
Surface	Strip galvanised
Surface to DIN	DIN EN 10346
Surface symbol	FS
Smallest sales unit (VG)	1 Piece
Weight	150,60 kg/100 pc.

Technical data

	Width	200,00 mm
	Side height	60,00 mm
	Plate thickness	1,25 mm
	Dimension B	200,00 mm
	Connector version	Integrated connector
	Shape	T piece horizontal
	Dimension	60x200 mm
	Suitable for maintaining electrical function	<input type="checkbox"/>
	Rail thickness	1,25 mm
	Material thickness, floor plate	1,25 mm
	NATO hole pattern	<input type="checkbox"/>
	Rustproof steel, pickled	<input type="checkbox"/>
	Wide-span version	<input type="checkbox"/>