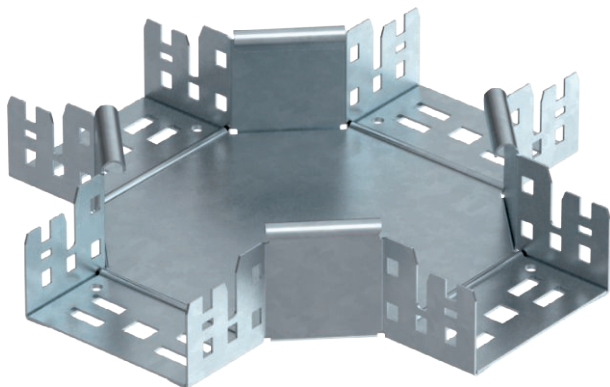


Technical data sheet

Magic 60 cross-over

Item no. 7027021



Cross-over with quick connector system. For all cable tray types of 60 mm side height.

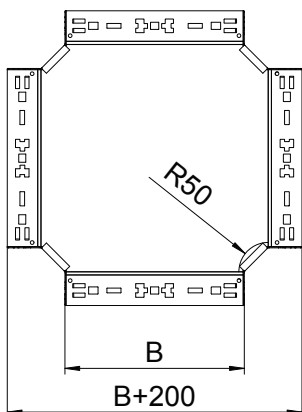


- St** Steel
- FT** Hot-dip galvanised

Master data

Item no.	7027021
Type	RKM 610 FT
Description 1	Cross over
Description 2	with quick connector
Dimension	60x100
Material	Steel
Material symbol	St
Surface	Hot-dip galvanised
Surface to DIN	DIN EN ISO 1461
Surface symbol	FT
Smallest sales unit (VG)	1 Piece
Weight	100,00 kg/100 pc.

Technical data



Width	100,00 mm
Side height	60,00 mm
Dimension B	100,00 mm
Dimension	60x100 mm
Plate thickness	1,25 mm
Suitable for maintaining electrical function	<input type="checkbox"/>
Rail thickness	1,25 mm
Material thickness, floor plate	1,25 mm
Rustproof steel, pickled	<input type="checkbox"/>
Wide-span version	<input type="checkbox"/>