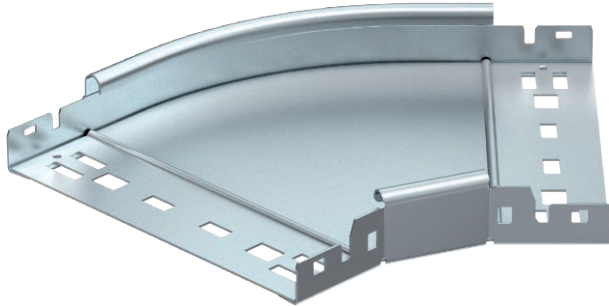


Technical data sheet

45° Magic bend 35

Item no. 6041002



45° bend with quick connector system. For all cable tray types of 35 mm side height.

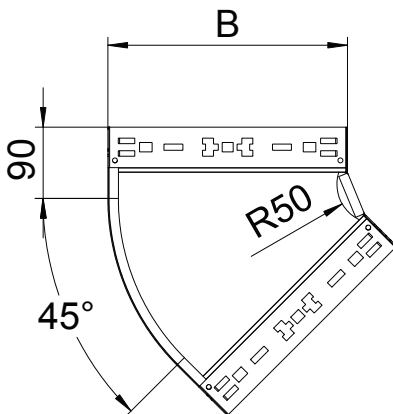


- St** Steel
- FS** Strip galvanised

Master data

Item no.	6041002
Type	RBM 45 320 FS
Description 1	45° bend
Description 2	with quick connector
Dimension	35x200
Material	Steel
Material symbol	St
Surface	Strip galvanised
Surface to DIN	DIN EN 10346
Surface symbol	FS
Smallest sales unit (VG)	1 Piece
Weight	74,50 kg/100 pc.

Technical data



Width	200,00 mm
Side height	35,00 mm
Dimension B	200,00 mm
Dimension R	150,00 mm
Bend (angle)	45°
Connector version	Integrated connector
Plate thickness	1,25 mm
Dimension	35x200 mm
Suitable for maintaining electrical function	<input type="checkbox"/>
Mounting perforation in base	<input type="checkbox"/>
NATO hole pattern	<input type="checkbox"/>
Change of direction	Horizontal
Rustproof steel, pickled	<input type="checkbox"/>
Side perforation	<input type="checkbox"/>
Wide-span version	<input type="checkbox"/>